

Salcombe Harbour Guide 2025



including
2025
Tide
Table

**Lifejackets & kill cords
save lives**
please use them correctly!

Quick Reference

EMERGENCY	Dial 999 for Police, Fire, Ambulance and Coastguard. Non urgent matters 101 In an emergency at sea or along the coast ask for the Coastguard or call UK Coastguard on VHF CH 16 or 01326 317575 by phone
AIRPORT	Exeter International, Honiton, EX5 2BD. 01392 367433 Newquay, St Mawgan TR8 4RQ. 01637 860600
ATM	Cash Zone alongside Whitestrand car park and within the Fortescue Inn
BUS	Shadycombe Road (opposite Health Centre), Tally Ho 01548 853081, First National 01752 402060
CHURCH	Church of England, Roman Catholic
CUSTOMS	0300 200 3700 DRUG HOTLINE 0800 595000
DENTIST	Island Street, Salcombe TQ8 8FE. 01548 844844, Various Kingsbridge 853568, 852165, 856161
FUEL BARGE	VHF CH 6, 07801798862, 7 days a week 0830-1700 April-Sept
HEALTH CENTRE	Salcombe, Shadycombe Road TQ8 8DJ. 01548 842284 Kingsbridge, Cookworthy Road TQ7 1AE. 01548 853551
HOSPITALS	Derriford, Crownhill, PL6 8DH Plymouth. 01752 202082 Kingsbridge, Plymouth Road, TQ7 1AT. 01548 852349
ILLEGAL FISHING	Devon IFCA 01803 854648, 07740 175479 and Harbour Office
INTERNET	Salcombe Library 01548 843423, various pubs and cafes
LIBRARY	Salcombe, Cliff House (beside Yacht Club) 01548 843423, Kingsbridge, Ilbert Road TQ7 1EB. 01548 852315
PHARMACY	Jhoots, Fore Street, Salcombe. 01548 468029 Boots, Prince of Wales Road, Kingsbridge. 01548 852354 Well, Quay Pharmacy, The Quay, Ilbert Road, TQ7 1EB. 01548 857158
POLLUTION	Harbour Office, Environment Agency 0800 807060 (24 hour service)
POST OFFICE	Salcombe Spar, Loring Road, TQ8 8BL, 01548 842836 Kingsbridge McColls, Fore Street, TQ7 1AB 01548 852348
PUBLIC TRAVEL	Traveline 0871 200 2233
TOURIST INFO	Salcombe 01548 843927, Kingsbridge 01548 853195
TRAINS	Passenger info 0845 7484950 Totnes, Plymouth stations www.nationalrail.co.uk
VETS	Kingsbridge 01548 852766, 01548 853322
WEATHER	Harbour Office - posted daily outside National Coastwatch Institution NCI Prawle Point. 01548 511259, VHF 65
WILDLIFE	RSPB 01392 432691 RSPCA 0300 1234999
YACHT CLUB	Cliff House, Cliff Road, Salcombe TQ8 8JQ. 01548 842593

HARBOUR OFFICE - Whitestrand, Salcombe, Devon. TQ8 8BU
Mon-Thu 0900-1645, Fri 0900-1615. April 5th - Sept 14th: Sat 0900-1615, Sun 0900-1300.
01548 843791, VHF CH 14, salcombe.harbour@swdevon.gov.uk

BATSON BOATPARK - Gould road, Salcombe, Devon TQ8 8DU.
01548 843791, b.boatpark@swdevon.gov.uk

OUT OF HOURS - Critical harbour matters - **01803 861539**



South Hams
District Council

Welcome...

... to Salcombe Harbour - a friendly, welcoming safe haven and eco-port set in one of the most beautiful locations in the south west.

The harbour reaches from just south of The Bar, a sandbar stretching across the entrance of the ria (submerged river valley), all the way up to Kingsbridge. Its high water quality and peaceful surroundings are enjoyed by a number of water users: bathers, canoeists, stand-up paddleboards, dinghies, yawls, yachts, power boats and super yachts - either individually or as part of one of the many colourful and exhilarating competitive regattas.

The harbour can be extremely busy, particularly in the high season, so please navigate with care and consideration, adhere to the speed limits (6 or 8 knots), minimise wake, wear lifejackets, and connect a kill cord when helming a vessel with an outboard engine. For this reason swimming across the harbour is prohibited, please enjoy the water in close proximity to the beaches.

A KILLCORD COULD SAVE YOUR LIFE, AND OTHERS, SHOULD YOU FALL OVERBOARD!

The harbour staff look forward to welcoming you to Salcombe Harbour and would be delighted to answer any questions or queries that you might have.

Enjoy your visit

*Cameron Sims-Stirling,
Harbour Master*

CONTENTS

- 2 Navigation
- 3 Approaches Chart
- 4 Rules of the road
- 5-6 Keeping safe
- 7 Towing your trailer safely
- 7 Forums
- 8 Byelaws
- 9 Harbour Taxi
- 10-11 How to moor your boat
- 12-13 Marine Security
- 14-15 Visitors arriving from sea
- 16 Visitors Charges
- 17 Le Port
- 18 Harbour Facilities
- 19 Harbour Dues & Resident facilities
- 20 Visitors arriving from land
- 21 Tide and Water Access
- 22 Beaches
- 23 Things to do & Events
- 24-25 RNLI
- 26-31 Environmental Respect
- 32-33 Harbour Map
- 34-35 Harbour Chart
- 36 Pontoon Diagrams
- 38-40 Tide Tables
- 42-43 The Wind Project
- 44 Adverts

Navigation



Visiting yachtsmen are encouraged to obtain navigational information available from official publications e.g. Admiralty Pilot and Charts or one of the many yachtsmen's pilots, guides or almanacs available.

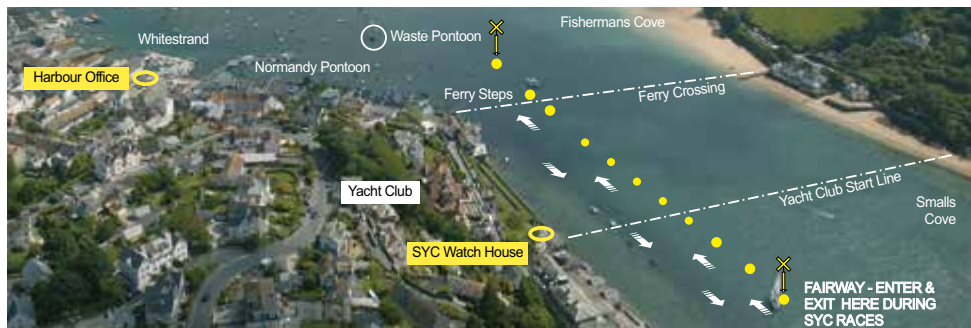
RELEVANT ADMIRALTY CHARTS Nos. 28 & 1613, Imray Y48, Y43 & C6, OS 202 & OL20

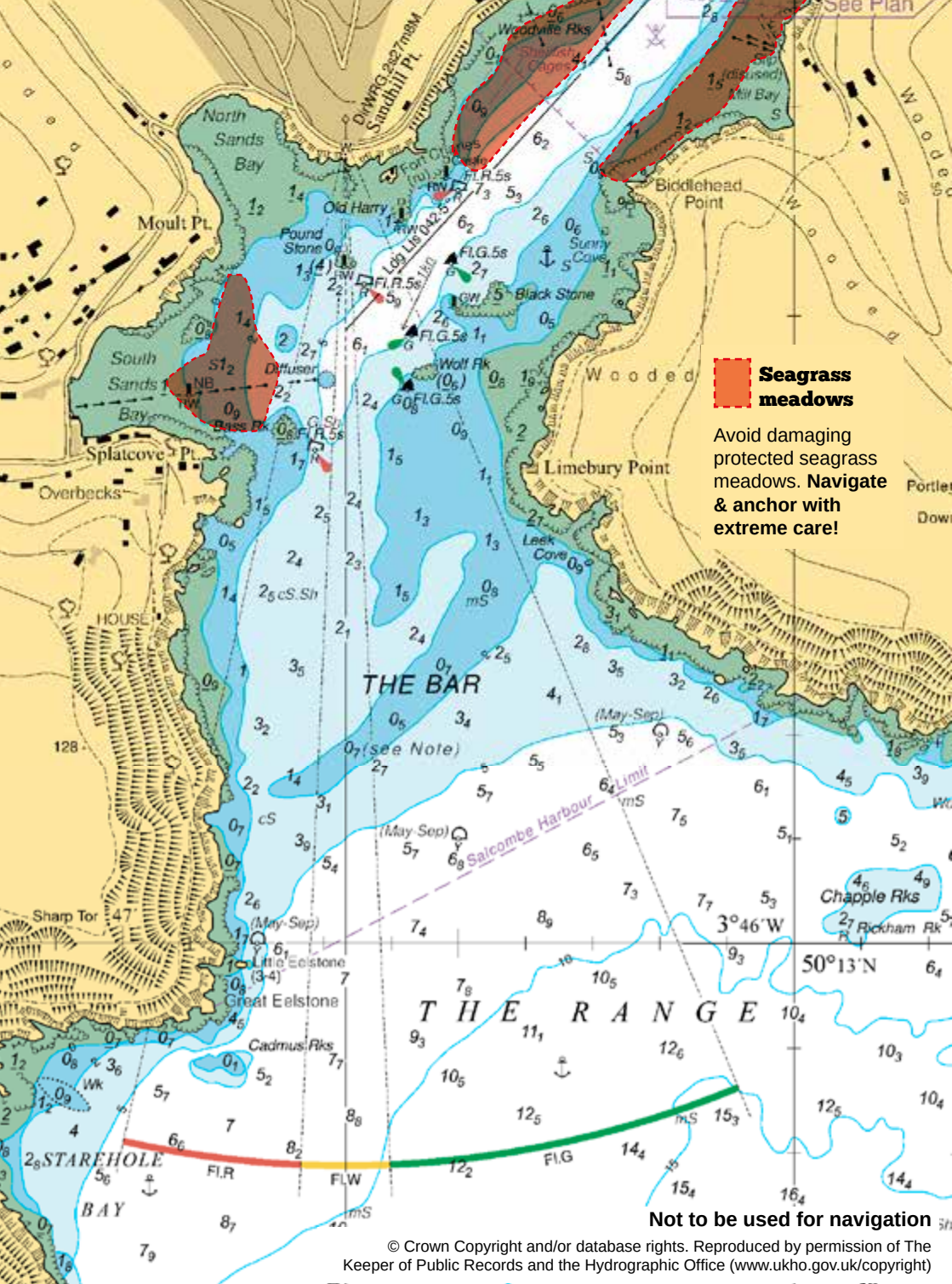
The harbour lies between Bolt Head to the west and Prawle Point to the east. Salcombe's Bar, made famous in Tennyson's "Crossing of the Bar", stretches south westerly across the entrance from Limebury Point on the east side. This sand bar has a least depth of 0.5 metres LAT and should not be negotiated on an ebb tide with strong onshore winds or swell. The entrance leading line (000°T) is marked by a red and white striped pole with red topmark on the Poundstone Rock, with a second beacon behind it on Sandhill Point, which is white with a horizontally striped red and white diamond topmark. The rear beacon displays a Directional Flashing light WRG.2s, of which the white sector 357°-002°T shows the leading line. Once Blackstone Rock is abeam to starboard, the main fairway course of 042°T can be set, marked by transit lights near to Scoble Point. The navigable channel through the turn from 000 T to 045 T is marked by six lateral buoys. Three port hand buoys at Bass Rock, Poundstone and Castle with FL.R.5s lights and three starboard hand buoys at Wolf Rock, Blackstone South and Blackstone North with FL.G.5s lights.

Racing Dinghy Free Fairway

During a dinghy race start sequence a boatlane/racing dinghy free fairway will be established between Millbay/Woodville Rocks and the East Portlemouth Ferry crossing. This is denoted by a line of yellow buoys on the town side of the channel with a yellow cross at either end and is active when the SYC Watch House displays yellow flashing lights. All non-racing traffic is requested to proceed within this lane maintaining a good look out.

This is a 6 KNOT ZONE - please keep wake to a minimum.





Seagrass meadows

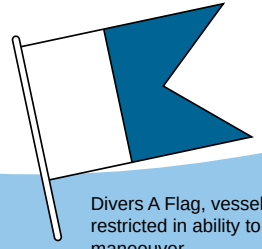
Avoid damaging protected seagrass meadows. **Navigate & anchor with extreme care!**

Not to be used for navigation

© Crown Copyright and/or database rights. Reproduced by permission of The Keeper of Public Records and the Hydrographic Office (www.ukho.gov.uk/copyright)

Rules of the Road

How to navigate safely within the harbour



Divers A Flag, vessel restricted in ability to maneuver. **STAY WELL CLEAR**

DEFINITIONS

Port

is the left hand side of the vessel.

Starboard

is the right hand side of the vessel.

Navigation Marks

which side to pass.

Upon entering harbour -

RED MARKS (Port Hand Mark)



leave it to port (on the left)

GREEN MARKS (Starboard Hand Mark)

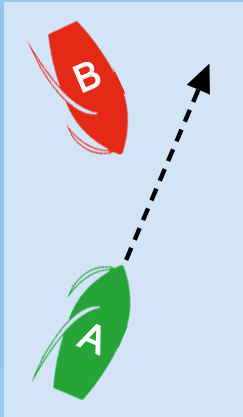


leave it to starboard (on your right)

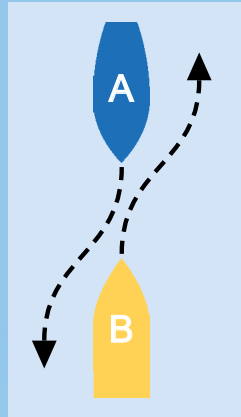
SPECIAL MARKS (indicating special area or feature)



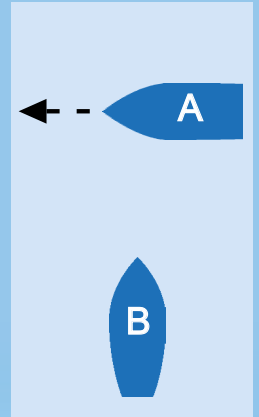
Within the confined spaces of the Estuary, safety for all our water users is paramount. Please refer to the "Rules of the Road" details below when using your boat in close proximity to other boats.



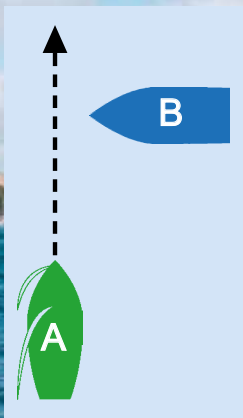
Rule 12 (a) (i)
B gives way, different tacks. Vessel on port tack gives way.



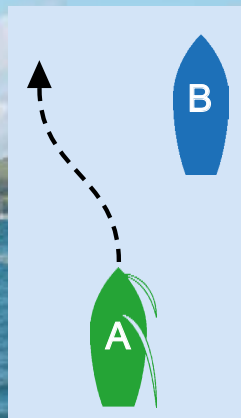
Rule 14 (a)
Motor vessels alter course to starboard.



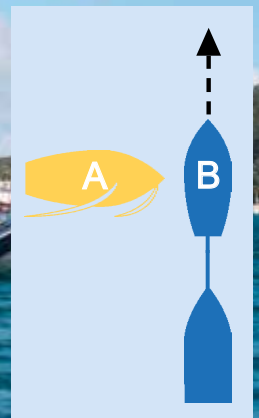
Rule 15
Motor vessels B gives way.



Rule 18 (a) (iv)
A stands on. Power gives way to sail.



Rule 13
An overtaking vessel (power or sail) must keep clear.



Rule 18
A gives way. Towing and towed vessels restricted in ability to manoeuvre.

Tips to keep your boating trip safe



EMERGENCY - **Contact UK COASTGUARD** **VHF #16DSC or call 999**



Wear correctly fitted life jackets/buoyancy aids



Power boat helms should always wear a kill cord



Know your harbour speed limits

Within the busier areas of moorings and pontoons there is a 6 KNOT limit, but this is not a target



**Be 'wake aware' -
Keep your wake low in the harbour**



Navigate with due care and attention



Do not navigate under the influence of drink or drugs

**stickers
available
in the
harbour
office**

Over the past year, our log books of everyday incidents have been analysed and used as part of our safety management system to identify key areas of concern. This leads us to, where possible, help educate harbour users to try to improve safety and, in turn, reduce the likelihood or severity of these incidents.



INCIDENT REPORTING

It is very important for the harbours Marine Safety Management System that all incidents are reported, including near misses, otherwise particular safety concerns cannot be correctly identified or mitigated against. ByeLaw extract 14 Notification of Collisions: the master of a vessel which has been involved in a collision with any vessel or property shall as soon as reasonably practicable report the occurrence to the Harbour Master and thereafter provide the Harbour Master with full details in writing.



SELLING YOUR BOAT AND VESSEL REGISTRATION

Byelaw 20. On any change in the ownership of a vessel kept within the harbour the parties to the change shall ensure that immediate written notification is given to the Harbour Master.

Where this has not been the case the Harbour cannot correspond with the appropriate party. Incorrect information can result in costs that owners have not been made aware of, abandoned vessels, a liability to the harbour and financial burden on its customers.

Byelaw 51.(1) - No person who owns or has charge of a vessel shall intentionally abandon, break up, set fire to or otherwise destroy that vessel on the banks or shore of the harbour except with the permission of the Harbour Master.

Byelaw 51.(2) - For the purposes of paragraph (1) of this Byelaw a person who leaves a vessel on the banks or shore of the harbour in such circumstances or for such a period that he may reasonably be assumed to have abandoned it shall be deemed to have abandoned it there intentionally unless the contrary intention is shown.

Should a boat be abandoned with no new owner identified, the existing owner will be liable for costs arising including disposal.

For the full list of Salcombe Harbour Byelaws please visit our website www.salcombeharbour.co.uk/byelaws



WaterFit



**SURFERS
AGAINST
SEWAGE**



**Environment
Agency**

WATER QUALITY

The harbour has a number of designated bathing beaches and live information can be obtained from the South West Water (WaterFit Live) and Environment Agency (SwimFo) websites and the Surfers Against Sewage SSRS App.

Towing your trailer safely

Please ensure your vehicle is capable of towing the laden / wet weight of your boat and ALL of the below are in place on the road and the slipway.

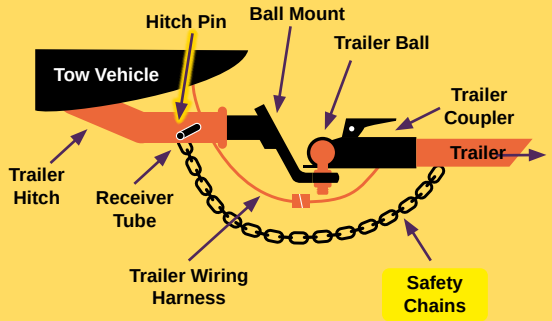
TOW BALL AND CONNECTIONS

Check that:

- the trailer is correctly coupled to the towball or pin - follow the manufacturer's advice
- the coupling height is correct
- the 7 or 13 core cable and plug is not damaged

BREAKAWAY CABLE / SAFETY CHAIN

Use a breakaway cable or secondary coupling. This engages the trailer's brakes (if fitted) or stops the trailer if it becomes detached from the car.



Check that:

- the cable is not worn or damaged
- there's enough slack in the cable so that it does not accidentally apply the brakes
- the cable will not drag on the ground when you're driving

Have your say

Harbour Community Forums

To ensure that the Harbour Board has strong and direct links with harbour users, local communities and other external organisations with an interest in the Salcombe-Kingsbridge Estuary, a formal consultation mechanism has been set up. Five not-for-profit community groups have registered their interest to work with the Council in relation to its future harbour activities and are recognised as 'Harbour Community Forums' forming part of a formal consultation mechanism for the Board.

Should you wish to participate in or become part of a forum please contact:

- The Salcombe Kingsbridge Estuary Conservation Forum:
[South Devon National Landscape Manager 01803 229331 - roger.english@southdevon-nl.org.uk](mailto:SouthDevonNationalLandscapeManager@southdevon-nl.org.uk)
- The Kingsbridge Estuary Boat Club:
chairman@kebc.co.uk
- South Devon and Channel Shell Fishermen:
07480 858260 -
sdandcshellfishermen@gmail.com
- Kingsbridge and Salcombe Marine Business Forum:
Kate Allen 01548 706 706 -
kate.allen@fineststays.com

Byelaws and Information

The Salcombe Harbour Act of 1954 extends over all the waters of the estuary, which means that, for everyone's benefit, the "Rule of the Road" and the Harbour Byelaws must be observed.

Harbour Byelaws extract

Made by virtue of powers conferred on the Council by virtue and in pursuance of the provisions of the Pier and Harbour Order (Salcombe) Confirmation Act 1954 and of the Harbours Docks and Piers Clauses Act 1847 and of all other powers enabling them in that behalf.

5. **Anchoring.** Must be in designated areas.
8. **Not to Lie Alongside Others.** Vessels must not double berth on resident moorings unless advised to do so by the Harbour Master.
9. **Obstruction of Others.** Vessels shall not interfere with access to pier, jetty, wharf, landing steps, landing place or hard without the permission of the Harbour Master.
14. **Notification of Collisions, etc.** Any vessel in a collision, stranded, or a danger to other vessels, shall report to HM asap.
18. **Vessels to have names marked on them**
19. **Registration of Vessels.** All vessels must be registered with HM and display a valid registration sticker.
31. **Intoxicated or Disorderly Persons.** No person shall be in a state of intoxication through drink or drugs or shall use any threatening, abusive, indecent, obscene, profane or offensive language or behave in a riotous, disorderly, indecent or offensive manner to the annoyance or hindrance of any other person.
42. Vessels not to be made fast to navigation buoys or marks nor to the seaward side of Whitestrand pontoon and if any contact has been made shall report incident to HM.
43. **Vessels to Navigate with Care** and at a speed which does not cause injury or discomfort.
45. **Speed.** No powered vessel shall exceed eight knots through the water unless HM permission obtained. There is a six knot zone from the Salcombe Harbour Hotel to the Saltstone and in the Kingsbridge Basin.

47. **Persons under 16 Years of Age** may not operate power-driven vessels capable of over 8 knots unless RYA qualified or accompanied by a senior.

48. **Water-skiing, Aquaplaning, Parascending, Personalised Watercraft, Power Boards, Water Bikes and Aqua Scooters etc.** may not operate within the harbour for the purpose of water-skiing, aquaplaning, parascending or any similar waterborne or airborne activity.

Towing donuts and bananas is also prohibited within the harbour with persons on board.

PWC's (Personal Water Craft) are considered vessels and must comply with International Regulations for preventing collision at sea and Harbour Byelaws. PWC's are to proceed at DEAD SLOW speed until clear of harbour limits. Wet bikes are not permitted within the Harbour.

During the months of July and August cruising yachts are requested not to sail inside the harbour.

Windsurfing is prohibited between the Salcombe Harbour Hotel and the Fuel Barge.

Swimming across the harbour fairways and in the middle of the channels is prohibited. Caution must be exercised swimming off the beaches, staying close to the shore. Diving is also prohibited within the harbour limits, unless specific permissions and operations have been sanctioned by the Harbour Master.

Owners of Powerboats who may be lacking in experience are encouraged to gain appropriate qualifications e.g. RYA National Powerboat Certificate or Advanced Powerboat Course.

Insurance

All craft using the Estuary must be covered by insurance for third party liabilities. The current level of third party insurance required is £3,000,000. Failure to maintain this insurance cover will result in the withdrawal of mooring/launching facilities.

Check your wash at all times - navigate with care and consideration, the speed limit is not a target and a safe speed might be much less so as to reduce wake to a minimum in busy areas.



The Harbour Authority runs a seasonal harbour taxi service between Whitestrand pontoon and moored vessels. The area of service extends south to the Visitors Moorings adjacent to MillBay, north to the Saltstone anchorage and includes Southpool creek up to the end of the deep water moorings and Batson creek up to the Batson Boat Park (map page 32). It can be contacted directly by calling 'Salcombe Harbour Taxi' on VHF channel 12 or phoning the onboard mobile 07807 643879. Alternatively pop into the harbour office or phone 01548 843791. State clearly yacht name, buoy number/location and number of passengers.

N.B. The harbour staff reserve the right to deviate from normal service/hours when exceptional or operational circumstances apply, such as during severe weather.

As a service to the public, the harbour taxi will run to and from East Portlemouth on the hour after the East Portlemouth Ferry has finished, at 1900, 2000, 2100 and 2200 providing bookings have been made in advance for trips from the East Portlemouth side. The service to East Portlemouth is weather dependent and may be cancelled without notice if the weather conditions deteriorate.

Please ensure that you are issued with and retain a ticket. During busy periods, staff will endeavour to collect passengers as soon as possible. Out of season, October through April, pre-booking of your Taxi will reduce waiting time.

NORMAL OPERATING HOURS 2025

January 2nd - March 30th	Weekdays	09:00, 11:00, 14:00 & 16:00 (4 trips)
March 31st - April 3rd	Everyday	09:00 - 16:30
April 4th - September 14th	Everyday	08:00 - 23:00*
September 15th - September 28th	Everyday	09:00 - 16:30
September 29th - December 23rd	Weekdays	09:00, 11:00, 14:00 & 16:00 (4 trips)

CHARGES PER PERSON:

- **£1.50** - Off Town
- **£2.00** - S. Pool Lake, The 'Bag'
- **£3.00** - Above Tosnos Point and East Portlemouth
- **50p** - Accompanied children under 16 years of age to all destinations

YACHT TAXI CARD:

- Discounted Taxi Swipe Cards: **£20 or £40** credit valid for all locations, saving up to 1/3 of individual cost

* the dates/extent of the full taxi shift (including evening hours) will be dependent on operational requirements and the weather

How to moor your boat

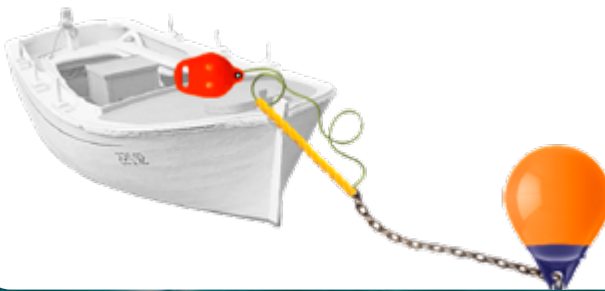
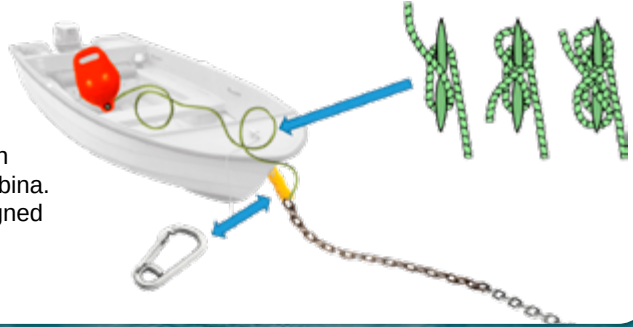
All moorings require you to fix your boat to the chain or buoy making a primary attachment with you own equipment, indicated by the yellow lines.



S.H.A. mooring configuration must not be altered but may be added to with your own equipment being mindful this does not increase the scope of the mooring.

Foreshore (drying) mooring

Pick up hand/pick up buoy and cleat off aboard lifting rope to secure boat to chain with your own warp or karabina. The length of chain is designed to be raised to the waters surface to attach to.



Dan buoy mooring

Pick up hand/pick up buoy and cleat off aboard lifting rope to secure boat to chain with your own warp or karabina as per foreshore mooring.

Deepwater mooring

Connect your own warps/chain to the shackle/eye/swivel on top of the mooring buoy.

Shackles and thimbles will help reduce wear on ropes when attaching to the buoy.

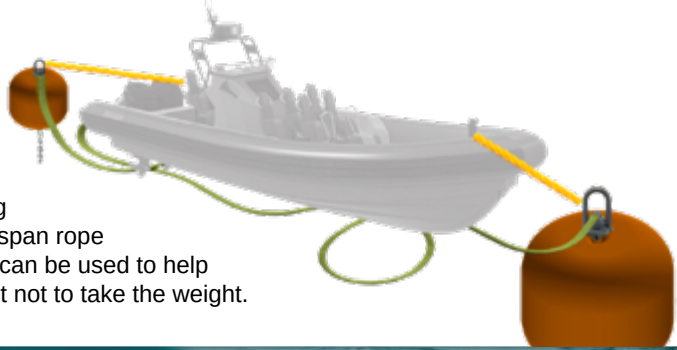
NB: All swinging moorings have a swivel as part of their construction.





Fore and aft mooring

Connect your own warps to both bow and stern points from securing points aboard. The span rope between the buoys can be used to help position the boat but not to take the weight.

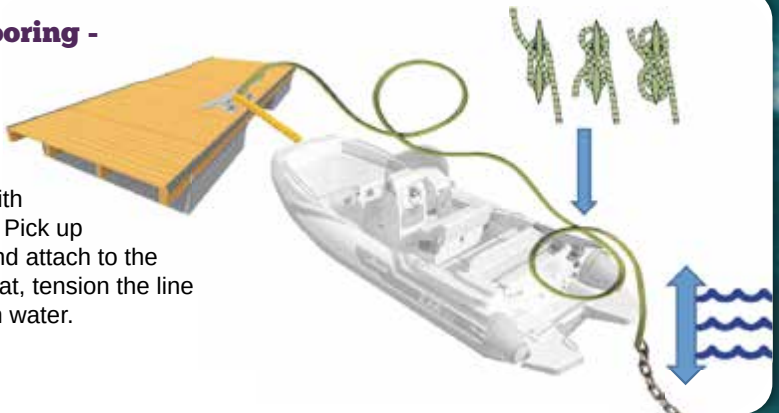


Pontoon mooring - alongside

Connect your boat to the pontoon cleats with your own warps. A bow and stern line will hold the boat into the pontoon whilst spring lines will prevent the boat moving forward or backward.

Pontoon mooring - stern line

Connect your boat to the pontoon cleat from the bow with your own warp. Pick up the stern line and attach to the back of your boat, tension the line to allow for high water.



Marine Security



Reporting incidents to the police

If you are the victim of boat theft, call the police immediately on 101. Check to make sure that your boat is still seaworthy and hasn't been badly damaged. And, if you can, check that neighbouring boats haven't been broken into as well.



If your call is an emergency, i.e. a threat to life, or if a crime is in progress, call 999 immediately.

Make sure you take as much information as possible, such as serial numbers, when reporting a crime.

Boat Watch

This is a community scheme. It operates in the same way as a Neighbourhood Watch scheme. The scheme is run by the community, for the community, and is supported by a number of agencies such as the police, fire service and local councils.

Boat Watch is linked locally, to the National Maritime Project Kraken, which delivers enhanced counter-terrorism vigilance with the aim of increasing public safety. Contact details for

Kingsbridge Estuary Boat Club Page 7.



Lock it - Mark it - Alarm it

101@devonandcornwall.pnn.police.uk

Security checklist:

- ✓ Don't leave anything loose in the cockpit or on the deck
- ✓ Always put your valuables in a strong, fixed locker and secure with a quality deadlock or padlock
- ✓ Take your personal and vessel papers with you – don't leave them on board
- ✓ Don't leave your home address on show
- ✓ Don't leave your keys in the ignition – always take them with you
- ✓ Keep your boat keys separate from your engine keys
- ✓ Make sure your curtains are closed so no-one can look in
- ✓ Ensure all unused ropes, fenders and other items are out of sight in your cockpit lockers and cupboards
- ✓ Make sure that your life raft and outboard motor are secure, as these are valuable and attractive to boat thieves
- ✓ If you're leaving your boat on a trailer for the winter consider putting it on blocks
- ✓ Keep your list of serial numbers up to date
- ✓ Take pictures of your property so that it can be easily identified if recovered.



**PROJECT
KRAKEN**

BOATS ARRIVING AT UNUSUAL TIMES?



REPORT IT. LET'S SORT IT.

To report anonymously, call the Coastal Crime Line powered by Crimestoppers on **0800 011 3304**. In an emergency, always call **999**.


Border Force

Powered by
Crimestoppers.

 **NCA**
National Crime Agency

ACT

**ACTION
COUNTERS
TERRORISM**



Visitors arriving from sea



The Harbour Authority provides a number of specific moorings, both pontoon berths and swinging moorings, to welcome visitors from sea. Moorings for vessels entering from the sea cannot be booked in advance apart from the overnight/restricted hours walk-ashore berth on Whitestrand Pontoon (extra charges apply). These vessels are assumed to be capable of being lived aboard and are expected to be stayed aboard overnight.

Permanent or prolonged residence on any craft is prohibited. Any person wishing to reside on a vessel within the Harbour for more than 14 days without a break should contact the Harbour Office. Prior permission from the Harbour Master must be sought if a vessel wishes to be left unattended overnight, this option is not guaranteed. Vessels offering no accommodation and/or are not attended overnight should be treated as a Visitor From Land to guarantee a mooring under those terms, page 20.

Swinging moorings are available off the town between Mill Bay and the Fuel Barge. Visitors' buoys are marked with a "V" and state maximum length, up to 10m on orange buoys and over 10m on yellow buoys. Vessels over 14m should contact the Harbour Office in advance to advise of their arrival.

A large visitors' pontoon with yellow pile caps is also available in "The Bag" to the north west of Scoble Point, offering good

shelter from prevailing weather conditions. Overnight walk-ashore berths are bookable at Whitestrand Pontoon outside commercial hours, generally for 2 vessels between 1900 and 0800, draught/tide dependant.

Anchorage adjacent to town include off Town/Fishermans Beach and Smalls Cove (avoiding the Yacht Club racing start line when appropriate). An anchorage further from town is available north of "The Bag" where the residents moorings finish, in the vicinity of the Saltstone. Anchoring is prohibited in the middle of fairways and near to ferry or cable crossings.

Short stays alongside Normandy Pontoon (eastern side) in the entrance to Batson Creek are available for water and provisions but are restricted to half an hour at busy times. Tenders up to 3.65m from visiting vessels from sea can berth in a designated area on the shoreside (western side) of Normandy Pontoon, not overnight. Please note a tender is defined as a craft that can be carried/stored aboard the parent vessel when not in use, otherwise normal visitor charges apply.

Assistance can be obtained from "Salcombe Harbour" VHF radio CH 14, office 01548 843791.

See
Diagrams
on pages
32 - 36



Customs

If you are leaving or entering the UK on a pleasure boat of any kind, you are required to submit a pleasure craft report. Visit [spcr.homeoffice.gov.uk](https://www.spcr.homeoffice.gov.uk) and complete the simple, one-stop digital form up to 24 hours before you depart. Yachtline 033 123 2012.

Animals

Vessels from foreign ports with animals on board which have not entered the country at a designated port via a recognised route or carrier are not permitted to berth alongside the quays or land the animals.

Kingsbridge - a harbour within a harbour

If your draft is less than 2 metres, your LOA is less than 11 metres and you are prepared to take the ground, why not visit the busy market town of Kingsbridge at the head of the estuary. Alternatively, hire a boat or use your tender for the beautiful 3.5 mile trip from Salcombe to Kingsbridge.

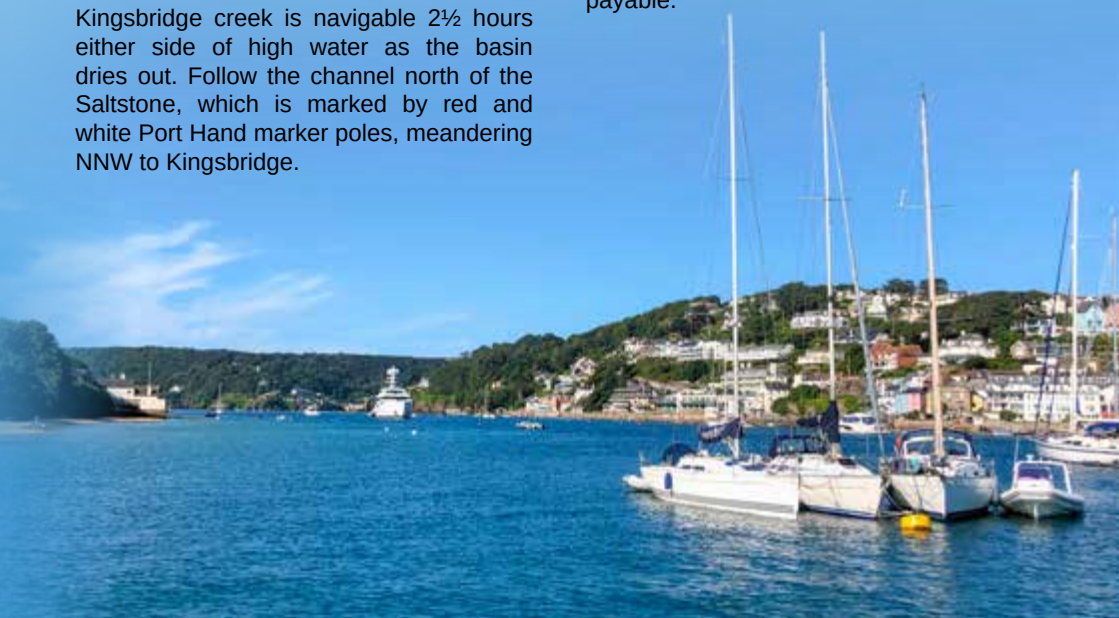
Kingsbridge creek is navigable 2½ hours either side of high water as the basin dries out. Follow the channel north of the Saltstone, which is marked by red and white Port Hand marker poles, meandering NNW to Kingsbridge.

As you enter Kingsbridge you will be rewarded with a vibrant market town and access to a number of facilities including supermarkets, quayside leisure centre where showers are available, cinema, tourist information centre and a wide range of shops. Street markets take place on Tuesdays and Thursdays and a local Farmers Market takes place on the Quay on the first Saturday of each month.

Visiting vessels can use the middle section of the main pontoon on the western side of the basin. There are additional berths against lean to piling on the sea wall north west of the Pontoon.

Kingsbridge also offers a quay with a launching slipway adjacent to the large car park. Vessels up to 1 metre draught can be slipped dependent on the tide.

Before proceeding to Kingsbridge please check berthing availability with the Harbour Office (not available Oct-Mar) and note that visitor mooring fees and harbour dues are payable.



Visitors arriving from sea

Charges

Salcombe's charges for vessels visiting from sea are staggered over the course of the year, based on daily Harbour Dues at £1.00 per metre inc VAT and daily Mooring Fee at £1.00 per metre inc VAT for swinging moorings and isolated pontoons. Vessel lengths are rounded up to the nearest metre.

Facility/Dates and charges

Anchorage (year round) – £1.00 per metre (Harbour Dues only)

Moorings (isolated swinging buoys and pontoons, may be rafted)

- 1st October to 31st March – £1.00 per metre (Harbour Dues only, irrespective of berthing on moorings)
- 1st April to 31st May and 1st September to 30th September – £1.50 per metre (Harbour Dues and half price Mooring Fee)
- 1st June to 31st August – £2.00 per metre (Harbour Dues and Mooring Fee)

All lengths rounded up to the nearest metre, charging based on overnight stays day by day - no weekly discount. Short stay price available.

Alongside/walk-ashore berths (when available), no rafting – An extra £1 per metre on top of the above charging structure

Flotillas (a minimum of six boats) **(not during the summer school holidays)** – Craft attending events such as Owners' Club or Yacht Club races, cruises or rallies will only be facilitated by prior arrangement where advanced payment is made en bloc by the organising body.





Renseignements pratiques

Bienvenue à Salcombe où nous espérons que vous passerez un séjour agréable. Le Personnel du Port sur l'eau et au Bureau du Port à Whitstrand se fera un plaisir de vous fournir tout renseignement désiré.

Mouillages pour les visiteurs

Situés à proximité de la ville, entre l'hôtel Salcombe Harbour et la barge à combustible. Les bouées pour les visiteurs sont généralement colorées en jaune et marquées d'un "V" et de leurs longueurs maximales. Un grand ponton situé dans "The Bag", au nord-ouest de Scoble Point, est à la disposition des visiteurs.

Les plaisanciers sont expressément priés de ne pas ancrer au milieu du chenal, près du traversier ni à proximité du passage des câbles. Mouillages recommandés devant Fishermans Cove, Smalls Cove (évitant la ligne de départ des courses du Yacht Club) et à l'entrée de Frogmore Creek. Vous pouvez demander l'assistance à l'ancrage auprès des bateaux "Harbour Master". Celles-ci sont équipées de Radio V.H.F (Chaîne d'écoute 14). Le Personnel du Port patrouille celui-ci sont entre 7 h et 23h pendant les mois d'été. Une patrouille de sécurité assure les heures restantes (de 23 h à 7 h).

Le ponton normandy pour visiteurs

Cette installation située dans le chenal excavé face à Whitstrand a une profondeur

minimale de 1 mètre, selon les données de la carte marine, et son but est de permettre aux plaisanciers en visite d'embarquer des provisions, de faire le plein d'eau douce et de visiter Salcombe.

Durée maximale d'amarrage en Normandie: 1/2 heure

Pas d'accostage entre 19h et 7h. L'intérieur de ce ponton est réservé aux bateaux de visite. Ces bateaux doivent porter le nom du bateau-mère.

Ordures

Vous trouverez les bennes à recyclage sur le ponton situé face à Normandy et aussi sur le ponton visiteur. Cette benne à ordures est réservée à l'usage exclusif des plaisanciers et il est recommandé de l'utiliser plutôt que de rapporter les ordures à terre.

Douches

Vous trouverez des douches au Whitstrand et Salcombe Yacht Club, Cliff Road, Salcombe. Les codes pour les douches sont imprimés sur votre reçu.

Service de vedettes de taxi

Veuillez appeler "Harbour Taxi" sur la Chaîne 12. Voir page 9 de ce guide pour dates et heures de service.

Harbour Facilities

Water	Fresh water is available at Normandy Pontoon and Batson Quay. During June, July and August fresh water is available on the Visitors' Pontoon in the Bag between 1000 & 1100 daily.
Showers	Salcombe Harbour Authority offer two individual cubicles at Whitestrand (code on receipt). Alternatively, Salcombe Yacht Club is happy for visiting yachtsmen to use their showers situated at Cliff House.
Refuse	We request that all harbour users recycle as much of their waste as possible. Recycling points are located afloat opposite Normandy Pontoon and on the Visitors' Pontoon in the Bag. Afloat bins are only provided for waste generated afloat.
Recycling	We separate our waste for recycling: <ul style="list-style-type: none"> ● Glass bottles & jars ● Paper & cardboard ● Batteries ● Plastic & cans ● Waste Oil ● General waste for landfill
Commercial Refuse	Please contact the Harbour Office if you have commercial waste to dispose of.
International Catering Waste	We are required to enforce the rules on handling International Catering Waste landed in the UK. International Catering Waste (ICW) is any food waste landed from vessels that have operated outside the UK. If since being in your charge the vessel has travelled outside the UK, you need to speak to a member of the harbour staff on arrival and will need to complete a declaration regarding ICW.
Holding Tank Pump Out	Black water pump out facility is provided free of charge at high water alongside Batson Quay, please contact the Harbour Office to arrange.
Lift Out	The Harbour Authority operates a slipway hoist with a lifting capacity of 10 tonnes. For further information contact the Harbour Office.
Scrubbing of Hulls	Boats wishing to scrub their hull should contact the Harbour Office to book a lift. To minimise pollution within the Site of Special Scientific Interest scrubbing can only take place over the grid at Batson.
WiFi	WiFi is available in local cafes, bars and the yacht club.
Fuel	Diesel and Petrol are available from the Fuel Barge, which operates on VHF 6 call sign "Fuel Barge" or 07801798862.
Facilities for Sailors with Disabilities	A hoist is available on Batson and Kingsbridge pontoons and will be made available on request. Although these are the only dedicated facilities we offer for sailors with disabilities, should you have a special requirement, please let us know and we will try our best to accommodate you.
Marine Services	There are a range of marine services available in Salcombe, many of which advertise in this guide: <ul style="list-style-type: none"> ● Sailmakers ● Marine Electronics ● Chandlers ● Riggers ● Marine Engineers ● Boat Builders

Harbour Dues & Resident facilities



Harbour Dues

Harbour Dues are levied to enable the Harbour Authority to fulfil its statutory duties. This includes the conservancy of the harbour, maintenance dredging, regular hydrographical surveys, navigation marks and beacons, and the enforcement of harbour byelaws etc. It also includes the fulfilment of our responsibilities within the Port Marine Safety Code including the training of staff, oil spill response and the port waste management plan.

All boats residing on annual facilities or visitors arriving from land are required to pay annual Harbour dues based on boat length and engine horsepower. This is also applicable to all vessels launching from land into the harbour including paddleboards, kayaks and personal water craft (jet ski etc). A daily payment is available for short stays.

Please ensure your Harbour Dues sticker is prominently displayed and not obscured whilst your boat is not in use. In purchasing your Harbour Dues you are confirming you hold appropriate third party insurance to £3,000,000 to cover the use of your vessel and mooring.

Resident moorings

Salcombe Harbour Authority manages the majority of mooring facilities in the harbour. As a municipal port and part of South Hams District Council (SHDC) we lease the fundus/seabed from the Duchy of Cornwall and manage the allocation of all mooring facilities, apart from those leased or owned directly by private boatyards/individuals. salcombeharbour.co.uk/edocuments

Those who pay Council Tax to SHDC are welcome to join our waiting lists which are subdivided into:

- Foreshore pontoons; Batson, Victoria Quay and Kingsbridge
- Foreshore moorings; various swinging mooring locations
- Deep water moorings/pontoons; Off town, Bag and Southpool
- Other shore side tender storage; various Boatpark spaces or dinghy racks

Provided that you remain a SHDC Council Tax payer, allocations will only occur where an applicant reaches the top of a particular waiting list (which may take many years) and has a suitable boat that can be accommodated on such available facility. Facilities are renewed annually and require retention the year beforehand, should your facility be relinquished you will no longer hold a position on the waiting list and must reapply.



Visitors arriving from land

The Harbour Authority provides a number of specific moorings for visitors from land to prebook in advance through the Harbour Office. These vessels are expected to be capable of taking the ground and not to be stayed aboard overnight as the majority of moorings are drying/on the foreshore.



Bookings are by the week, Friday to Friday and open on the first working day of January for the forthcoming season. Moorings have a fixed weekly price and annual Harbour Dues are required to allow a vessel to book a mooring and to use the harbour and slipways, the current year's sticker must be displayed (page 19).

Vessels up to 6.1m LOA will be booked onto foreshore moorings and vessels up to 9m LOA onto deeper water fore and aft moorings that may be rafted (2 boats alongside each other). The Harbour Taxi (page 9) is available to access the majority of these visitor facilities in the lower half of the harbour but might be more draught/tidally restricted than your own craft.

Tender Berthing

Tenders of up to 4.2m in length may be berthed on the back of Whitestrand Pontoon (west side) and the upstream side of Southpool pontoon (east side). Tenders of up to 3.65m in length may be berthed on the downstream side of Frogmore Pontoon (west side). ALL tenders must be registered for Harbour Dues and display the appropriate sticker. At Whitestrand an addition pontoon and shuttle service are supplied in July and August to ease overcrowding. This requires an additional permit to berth on Whitestrand Pontoon, the overflow pontoon or the slipways, charged by the month for July and/or August.



Tide and Water Access

High Water	05 hours 23 minutes before Dover
Maximum range	5.7 metres
Mean range (Springs)	4.7 metres
Mean range (Neaps)	2.2 metres

Tide Tables for Salcombe Harbour and Kingsbridge Estuary are printed in this publication and obtainable from local chandlers and stationers.

These are all considerably affected by wind conditions and barometric pressure.

Batson Creek Boat Park + Slipway

There is a car, boat and trailer park off Gould Road in Batson Creek, with an attendant on duty during the season. Car/Boat Park spaces can be booked in advance on a weekly basis, fri-fri or sat-sat, or arranged on a daily basis with the attendant upon arrival - 01548 843791, email: b.oatpark@southhams.gov.uk

The Batson Boat Park Slipway also provides launching at almost all states of the tide for trailable small craft, unlike the other drying slipways around the harbour. Security cameras monitor the whole boat park area and have been enhanced with new infrared capability and fast retrieve hard drives. The trailer park is locked overnight to prevent unregulated access.

Slipway Guidelines

Slipways can be extremely dangerous areas, please follow these guidelines to reduce risks and improve everyone's safety.

- PLEASE be considerate to other slipway users at all times. Safety is paramount.
- Use the one-way system within the boatpark to reduce congestion.
- **When towing trailers, ensure that the safety chain or loop is connected at all times.**
- A maximum of 10 minutes is permitted while using the slipway. If you require assistance please see the attendant.
- Inflation of dinghies is not permitted on the slipway. An inflation area has been provided for this purpose and a pump is available - see boat park attendant.
- Use of the slipway is exclusively for the launch and retrieval of vessels. Please prepare your craft in the designated area.
- Personnel not involved directly in launching and recovering vessels should keep clear of the slipway. A pedestrian accessway and bridge to the Batson Slipway pontoon should be used to access afloat craft without traversing the slipway.
- Berthing on Batson Slipway pontoon is restricted to loading and unloading only, with crew in attendance, overnighting berthing is prohibited.

Beaches



East Portlemouth side - Fishermans, Smalls, Mill Bay & Sunny Cove



The Beaches of East Portlemouth are privately owned and use of the beaches is at the discretion of the owners.

For the benefit of all, the owners request:

1. ABSOLUTELY NO barbecues, fires or beach parties
2. ABSOLUTELY NO camping, day or overnight
3. No undue noise or loud music
4. Dogs should be kept under strict control at all times. Dogs on Mill Bay Beach to be on leads between 10am and 5pm May to September
5. All rubbish should be taken away
6. No outboards or road trailers to be left on the beach at any time
7. Night fishing seaward of Mill Bay only
8. No mooring of any boats on the foreshore
9. No driving or parking of any motor vehicles

Mill Bay Boat Parking

Boat owners can obtain their permits for parking on Mill Bay Beach from Salcombe Yacht Club, Cliff House, Cliff Road, Salcombe TQ8 8JQ which is open Tues - Fri - 9.30am - 4.30pm. www.salcombeyc.org.uk/product/millbay-boat-parking-ticket

Permits are issued for single or multiple number of weeks with a limit of four weeks per year. Those racing in the Merlin Rocket, Yacht Club or Town Regattas may obtain their permit with their Regatta application. There is a recommended donation of £10 per week per boat, the surplus of which will go to local charities. Please refer to beach notices and signposts indicating where you may park your boat. Boat parking is prohibited under the houses. Permits must be CLEARLY displayed on the boats at all times, even when covered. Boats left on the beach beyond their permit date will be removed at the boat owners' expense.

North Sands



Sandy beach sheltered from westerly winds, no dry sand on spring tides.

South Sands



Sandy beach with watersports centre.

Soar Mill Cove



Outside the harbour, accessible along scenic coast paths, steep in places, 1h from car park.



Things to do & Events

Events / Sailing Diary 2025

Merlin Rocket Silver Tiller	22-23 April
Yawl, National 12 & RS Open	3-5 May
Salcombe Crab Fest	4 May
Yawl & Laser Open	24-25 May
Kingsbridge Food & Music Festival	30 May - 1 June
Salcombe Gig Regatta	8 June
Merlin Rocket Week	29 June - 4 July
Kingsbridge Fair Week	19-26 July
Salcombe Yacht Club Regatta	3-8 August
Salcombe Town Regatta	10-16 August
Topper, Laser Open	13-14 Sept
Yawl and Aero Open	27-28 Sept
Lets Go Velo Triathlon	28 Sept
Solo Open	11-12 October
SUP The Creek	18-19 October

Adventure Parks

Woodlands Leisure Park, Blackawton, Totnes 01803 712598

Art Galleries

Coves Quay Gallery, 6 Coves Quay, Thorning St, Salcombe TQ8 8DW - 01548 842666

Estuary Gallery Russell Court, Fore St, Salcombe TQ8 8BS - 01548 843948

Kingsbridge Mayne Gallery, 14 Fore St, Kingsbridge TQ7 1NY - 01548 853848

Cinemas

Kings Cinema, Fore St, Kingsbridge TQ7 1PG - 01548 856636

Crab Fishing

Customs House Quay & Victoria Quay, overlooking the lifeboat, Salcombe. Not on the pontoons please.

Ferries - seasonal availability

The Kingsbridge Ferry runs from the Ferry Pier at Salcombe to Kingsbridge from May to September, times vary dependant on the tide.

The East Portlemouth Ferry runs from the Ferry Pier at Salcombe on the hour and half hour when quiet and continuously when busy.

The South Sands Ferry runs from Whitestrand at quarter to and quarter past the hour, it returns from South Sands on the hour and half hour.

Golf

Thurlestone Hotel 9 hole pay and play 01548 560382

Thurlestone Golf Club, visitors welcome with Handicap Certificate - 01548 560405

Dartmouth Golf and Country Club visitors welcome with a Handicap Certificate - 01803 712686

Dinaton Golf Club, Ivybridge - 9 hole pay and play - 01752 892512

Bigbury Golf Club - 01548 810557

Leisure Centres • Swimming • Gym

The Quay Leisure Centre, Kingsbridge, full leisure centre facilities 01548 857100

Salcombe Harbour Hotel, swimming pool and gym 01548 844444

Salcombe Swimming Pool (Seasonal - Open Air)

Museums

The Salcombe Maritime Museum (below TIC)

Cookworthy Museum, Kingsbridge 01548 853235

Overbecks Museum, Sharpitor, Salcombe 01548 842893

Tennis Courts available to hire

North Sands Salcombe - booking at the Winking Prawn, North Sands - 01548 842326

Salcombe Tennis Club - contact John Sprague - 01548 843044

Kingsbridge Recreation ground courts - booking at the Café - 01548 852971



Salcombe Lifeboats

Salcombe has had a Lifeboat Station for 155 years. The current Station is operated by a team of 38 local men and women, the Coxswain being a full-time employee of the RNLI, the remaining 37 are all volunteers. Our mission is to reach any casualty, in any sea/weather conditions, within 10 miles of the lifeboat station, within 30 minutes of first being called. The station operates two boats, the 25-knot all-weather lifeboat (ALB) The Baltic Exchange III capable of operating in any sea/weather and the 35 knots Atlantic 85 inshore lifeboat (ILB) Gladys Hilda Mustoe for work closer to the shore.

Search & Rescue Incidents

During 2023 the Salcombe lifeboats have been launched on 36 occasions, to a mixture of incidents involving yachts, fishing boats, commercial vessels, kayakers, swimmers, divers etc. The RNLI nationwide launched on 9,192 occasions and aided 10,734 people with 269 lives saved.

Over the past 155 years, the Lifeboat has remained a core part of what makes Salcombe special, and its activities are supported by a strong team of shore helpers, launching officers, fundraisers and other voluntary supporters.

Lifeboat Operations Manager: Nigel Blazeby

 www.salcombelifeboat.co.uk

Fundraising

The RNLI is a registered charity and relies on voluntary contributions from the public, it receives no Government funding. The annual cost of running an all-weather lifeboat station is circa £280,000 and an inshore lifeboat station circa £100,000. The Fundraising Crew work tirelessly to organize and run events; If you would like to be a part of the Fundraising Crew please contact us.

Lifeboat Museum & Shop

As part of the lifeboat station in Union Street there is a museum displaying the 155-year history of Salcombe lifeboats, and a retail shop with RNLI branded clothing, cards, and other exciting goods for sale.

We are 'One Team'

Salcombe RNLI Team consists of: Operational Seagoing Crew, Operational Shore Crew, Launching Officers, Press Officer, Fundraising Team, and our Shop Team. The entire team is nearly 50 strong. Only one is employed; the remainder are volunteers! If you are interested in joining us, please contact Nigel Blazeby.

 **01548 84 2158**  **rnlisalcombe**

 **@salcombernli**  **@RNLIsalcombe**



Lifeboats



GIVE YOURSELF A FLOATING CHANCE

If you're in trouble in cold water:

- 1 Fight your instinct to thrash around**
- 2 Lean back, extend your arms and legs**
- 3 If you need to, gently move your arms and legs to help you float**
- 4 Float until you can control your breathing**
- 5 Only then call for help or swim to safety**

Help save lives. Share our Float to Live advice.
RNLI.org/RespectTheWater



The RNLI is the charity that saves lives at sea
Royal National Lifeboat Institution, a charity registered in England and Wales (209603) and Scotland
(SC037736). Registered charity number 20003326 in the Republic of Ireland

Welcome to Salcombe Harbour - Kingsbridge Estuary

A rich Local Nature Reserve? ...

... it's our choice!

The Salcombe-Kingsbridge Estuary is unusually rich – with such a small rainwater catchment area and no river, its conditions are highly dominated by the tides. This results in some unusually sheltered, fully marine conditions that support a particularly rich diversity of habitats, species and communities of marine life.

Rich saltmarshes and seagrass jungles, kelp forests, coral and sponge gardens – all are found here and don't be surprised to see grey seals, kingfishers and other coastal characters. Along with the commonly undervalued mudflats, some of these support internationally important ecosystem services such as carbon sequestration and storage, biodiversity, fish nurseries and water quality improvements!

However, without a river to 'wash' waterborne issues such as nutrients out, these same local conditions mean that these issues can reside in the estuary for longer. The nutrients, for example, can exacerbate algal blooms that upset and smother some of the rich local ecology.

However, it is all in our individual gift to join forces and make a collective positive difference at home, in the garden, street or countryside, on or in the water ... nothing hard, just keep up the common-sense respect and care outlined over these pages! And not just for the estuary but for our own health and wellbeing too!

The estuary is designated as a marine Site of Special Scientific Interest and Local Nature Reserve* – where its understanding & conservation, sustainable use & enjoyment are all positively encouraged. A great way to enjoy the estuary and some of its wildlife is to learn more about it, maybe join an event with a local operator. You can find out more from one of our local Information Centres or visit the South Devon National Landscape website for many free self-guided trails, events & guides about this special area.

*A safety-net of byelaws help protect the estuary and wildlife, to keep it special; dogs should be under close control to minimise disturbance, there are restrictions on open fires and some bait collection activities. The local conservation management of the estuary is overseen by the South Devon NL Estuaries Partnership.



**South Devon
National
Landscape**



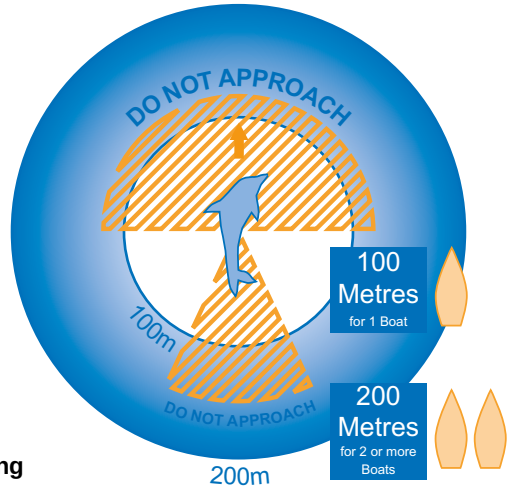
**South Devon
Estuaries
Partnership**



Marine Animals Code of Conduct

For some animals, the confined shallows of our estuary place greater demands on their ability to navigate and extra allowances must be made for them.

- **Always let them decide what happens**
- **Keep your distance** never closer than **100m** where possible
- **Never drive head-on to, or move between, scatter or separate groups of animals.** If unsure, stop and put the engine in neutral
- **Take special care with mothers and young**
- **Avoid repeated changes in direction or speed - maintain a slow 'no wake' speed -** if animals keep heading away or your activity is distressing them, slowly leave
- **Never** dispose of any rubbish, litter or contaminants at sea.



Don't stay for more than 15 minutes

Reporting offences

Many marine animals are declining and your active co-operation in conserving them is expected by law - most are protected by the Wildlife and Countryside Act (as amended). It is an offence to deliberately or recklessly disturb, harass or endanger them.

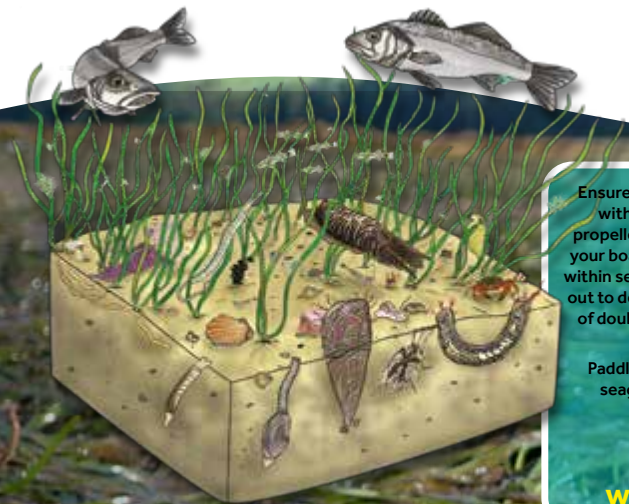
Please report any such incidents to the Police or RSPCA stating boat details (type, colour, name etc.) or car registration ... thank you.

Police - 101

RSPCA - 0300 1234999

Seagrass Meadow Jungles!

Our seagrass meadows support a jungle-like community of wildlife



Ensure you are aware of where our seagrasses grow (see chart within this guide) and avoid these areas - avoid excessive propeller wash, shallow water navigation, anchoring or allowing your boat to ground or drag over the beds. If you do find yourself within seagrass simply STOP, lift your engine clear & paddle gently out to deeper water & well clear. Always give shallows the benefit of doubt, our seagrass meadows are growing and but need our continued care!

Paddlers too please take extra care over exposed or shallow seagrass communities - avoid harsh paddling & 'punting' within or launching over them.

A 'common' seagrass leaflet is available from the Harbour Office or downloadable from:

www.SouthDevon-NL.org.uk

- Some of the UK's richest seagrass meadow communities are found within Salcombe Harbour – their ecosystem services benefit us all
- Our estuary supports two seagrass species but are found in three forms and support two types of meadow!
- Seagrasses meadows help reduce the effects of global warming 35x more effectively than tropical rainforests
- Seagrass meadows provide vital food and shelter for richly diverse communities of wildlife and are important nursery habitats for many commercially important fishery species
- Seagrasses are true flowering plants, with leaves, roots & seeds - not seaweeds at all
- Globally, seagrass meadows are one of our fastest disappearing marine communities - suffering a wasting disease, thought to be pollution related, the extent of seagrass in the UK is just 10% of that pre 1930's. They may be showing some signs of recovery locally but they are still fragile and need our care ...



**South Devon
National
Landscape**



**South Devon
Estuaries
Partnership**

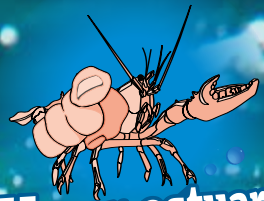


**South Hams
District Council**

Your Harbour, Your Estuary Needs You!

While you may have a small impact on our planet, remember there are a lot of us!

Here are some simple things that will make a massive difference when we all try.



Your estuary needs you!

Cigarette butts are plastic & toxic to aquatic life - Bin the Butt!

Only ever the 4p's down the Loo - Pee, Poo, Puke & Paper!

Keep wake to a minimum ... on the slow side!

Avoid seagrass meadows - keep to deep water channels only

Only Rain Down road Drains, they drain to local water courses

Be aware of sensitive shore and seabed communities - these are our carbon sinks - cross, paddle, motor and anchor carefully

Anti-foul may be a necessary evil but make sure it's in a tin, on your hull or being disposed of appropriately

Dog parents - dispose of poo appropriately - it can pose a risk to bathers and water quality

Be part of the BioSecurity solution "CHECK - CLEAN - DRY"

Leave nothing but ripples and footprints - take only photos & great memories

Prevent Fat-Bergs - reduce Food, Fats, Oils or Grease down the sink

Paddlers - take extra care when launching over sensitive shores

Litter matters - collect your 5-a-day

Reduce > Refuse > Reuse > Recycle

Be wildlife sensitive - give it space & respect - it may be the law

Every drop counts - refuel & top up oil with care

Fit a holding tank and use local pump-out facilities - if you must pump-out, only pump out on the ebbing tide or out to sea

This is a soft water region - dose detergent for 'soft water'



South Devon
National
Landscape



South Devon
Estuaries
Partnership



Salcombe
EcoPort



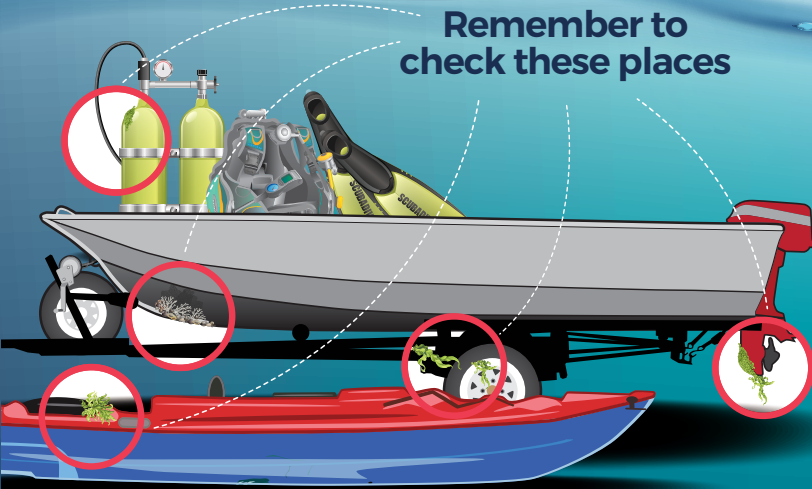
STOP THE SPREAD

Invasive plants and animals can harm the marine environment and wildlife, damage boats, and foul hulls, pontoons, and other hard surfaces. They can be small and hard to spot so are easily spread on damp equipment and clothing.

Protect the marine environment and sport you enjoy by keeping your kit free of invasive plants and animals.



Remember to check these places



Watch out for:



SLIPPER LIMPET



CARPET SEA SQUIRT



WAKAME

CHECK

Check boats, equipment and clothing after leaving the water for fouling or plant material. Remove anything you find and put it in the bin. Reapply anti-fouling annually.

CLEAN

Clean everything thoroughly with freshwater as soon as you can, paying attention to ropes, bilges, trailers, and areas that are damp and hard to access. Wash your anchor and chain before leaving an anchorage.

DRY

Dry - drain water from every part of your trailer and boat, including the bilge, before leaving the site. Dry everything for as long as you can before using elsewhere.



Find out more about invasive plants and animals and how you can help to stop the spread at:



nonnativespecies.org/
checkcleandry



Jellyfish ID Guide

While some jellyfish are harmless or have a very mild sting, others have a painful and even dangerous sting. **MCS would therefore recommend that, for your own safety, you do not touch jellyfish.**



Moon jellyfish
Mild sting.
Up to 40cm in diameter. Transparent, umbrella-shaped bell edged with short hair-like tentacles. Recognised by the four distinct pale purple gonad rings in the bell. Manubrium (mouth and arms, underside and centre of bell) bears 4 short, frilled arms.



Compass jellyfish
This jellyfish stings.
Typically up to 30cm. Colour variable, but usually has pale umbrella-shaped bell with diagnostic brownish V-shaped markings, 32 marginal lobes and 24 long, thin tentacles, four long, thick, frilled arms hang from the manubrium.



Lion's mane jellyfish
This jellyfish stings.
Large, usually 50cm but can reach 2m in diameter. Large reddish brown, umbrella-shaped bell with a mass of long, thin hair-like tentacles as well as short, thick, frilled and folded arms.



Blue jellyfish
Mild sting.
Up to 30cm, similar shape to *C. capillata* but smaller with a blue bell through which radial lines can be seen.



Barrel jellyfish
Mild sting.
Up to 1m in diameter. Robust with a spherical, solid rubbery bell, which can be white or pale pink, blue or yellow and fringed with purple markings. The bell lacks tentacles but eight thick, frilled arms hang from the manubrium.



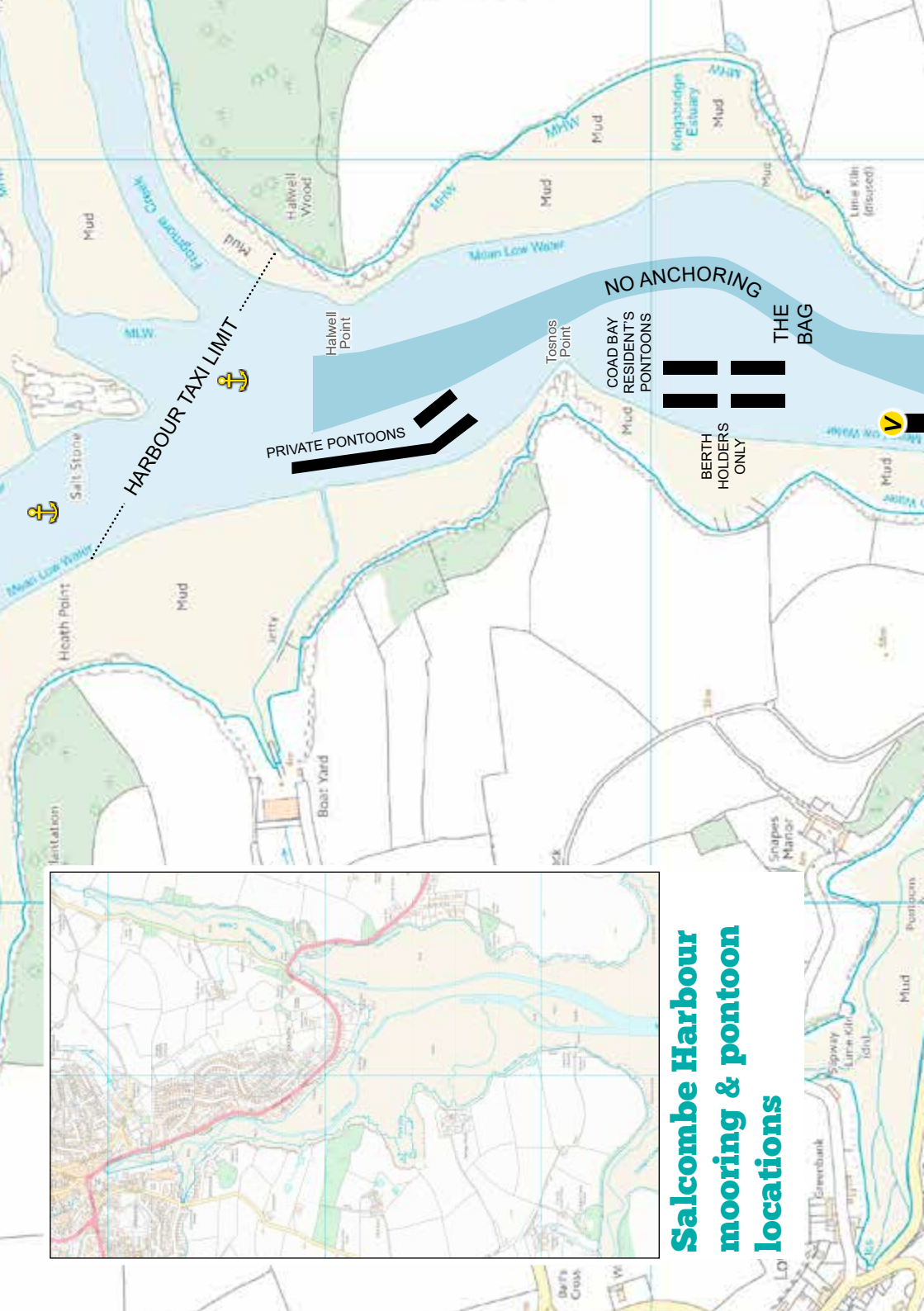
Mauve stinger
This jellyfish stings.
Up to 10cm. Has a deep bell with pink or mauve warts, 16 marginal lobes and eight marginal, hair-like tentacles. Manubrium bears four longer frilled arms with tiny pink spots.



By-the-wind-sailor
Generally harmless.
Not a jellyfish but a floating, solitary hydranth. Up to 10cm long and blue-purple in colour. Upright sail and chitinous float are diagnostic, with a mass of small tentacles surrounding the mouth on the underside. Occurs in vast swarms.



Portuguese man-of-war
This animal stings.
Not a jellyfish, but a floating colony of hydrozoans. The oval-shaped, transparent float with crest is characteristic. Blue-purple in colour, with many hanging 'fishing polyps' below that may be tens of metres long. Extremely dangerous to humans due to their powerful sting. Rare in the UK but if found in numbers should be reported to the local authorities.



HARBOUR TAXI LIMIT



PRIVATE PONTOONS

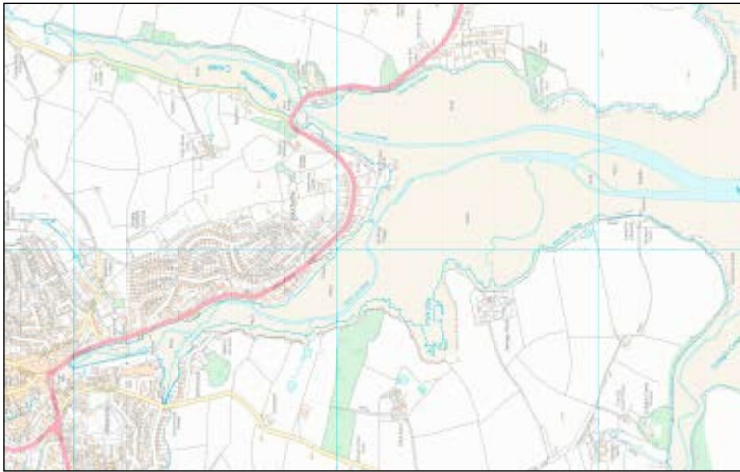
NO ANCHORING

COAD BAY
RESIDENTS
PONTOONS

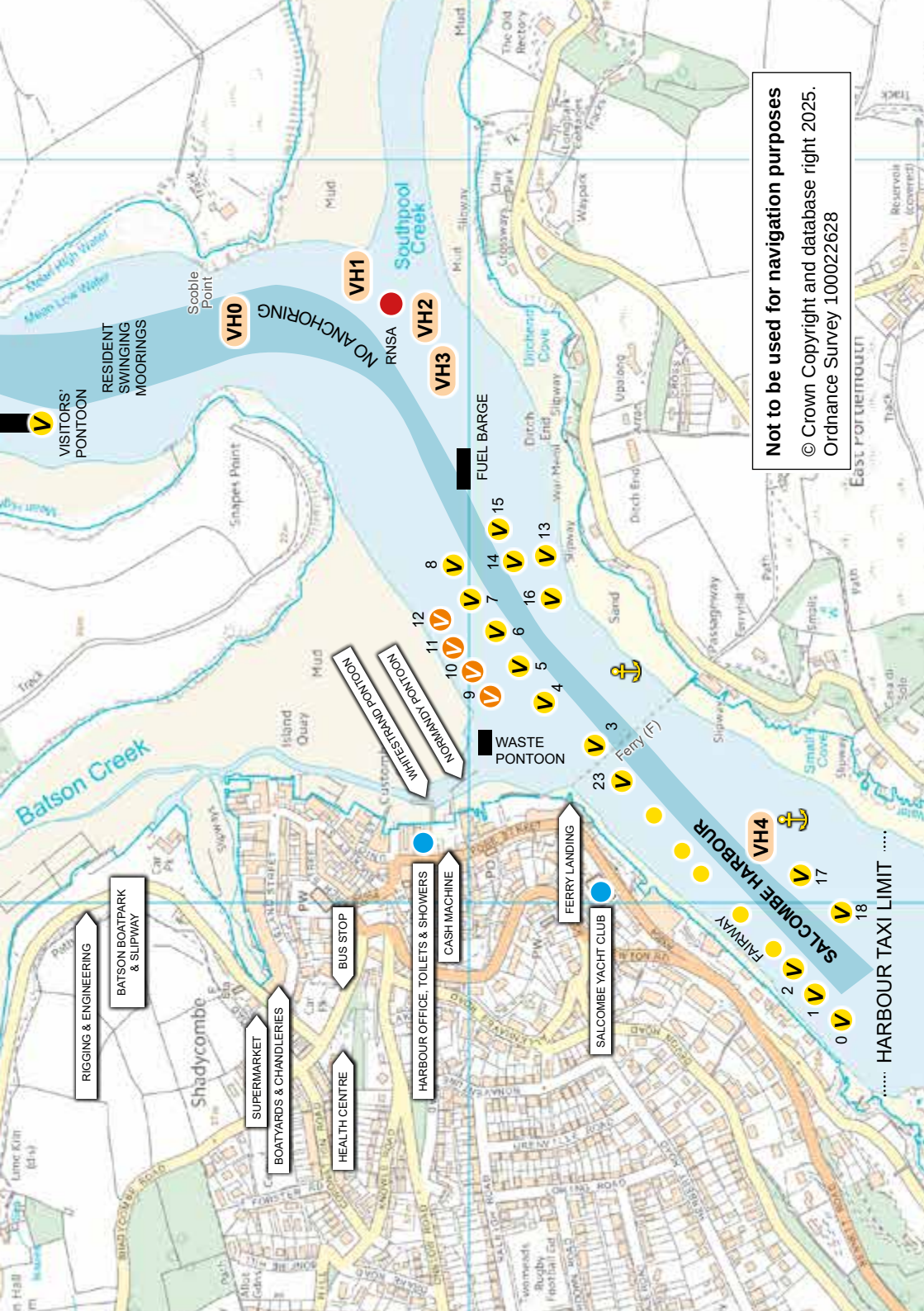


BERTH
HOLDERS
ONLY

THE
BAG



Salcombe Harbour mooring & pontoon locations



Not to be used for navigation purposes
 © Crown Copyright and database right 2025.
 Ordnance Survey 100022628

RIGGING & ENGINEERING

BATSON BOATPARK & SLIPWAY

BOATYARDS & CHANDLERIES

HEALTH CENTRE

BUS STOP

HARBOUR OFFICE, TOILETS & SHOWERS

CASH MACHINE

FERRY LANDING

SALCOMBE YACHT CLUB

VISITORS' PONTOON
 RESIDENT SWINGING MOORINGS

VH0

VH1

VH2

VH3

VH4

NO ANCHORING

FUEL BARGE

WASTE PONTOON

WITESTAND PONTOON

NORMANDY PONTOON

SALCOMBE HARBOUR

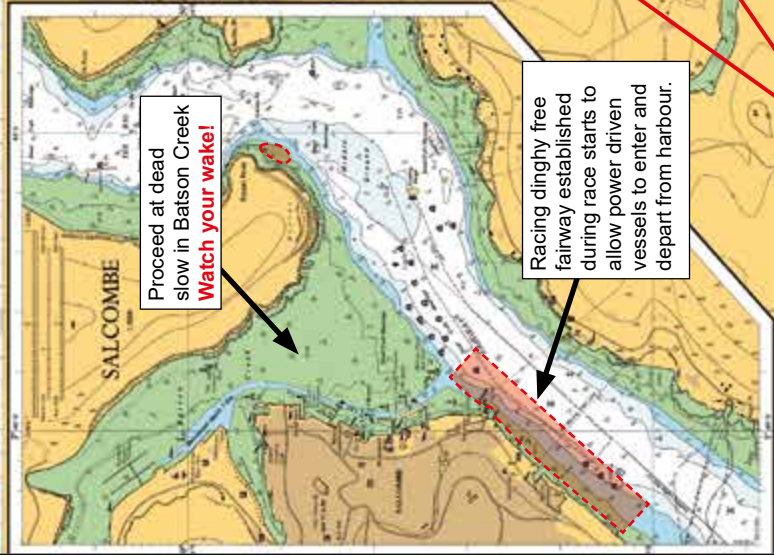
..... HARBOUR TAXI LIMIT



Salcombe Harbour & Kingsbridge Estuary



The estuary is a marine Site of Special Scientific Interest and Local Nature Reserve. Please join us in caring for this special area - byelaws apply. There is a 5 metre tidal range within the estuary. The areas coloured green on the chart dry out at low water. Beware of strong tidal streams, if you ground, stay with your boat and call the Harbour office.



Proceed at dead end slow in Batson Creek
Watch your wake!

Racing dinghy free fairway established during race starts to allow power driven vessels to enter and depart from harbour.

Seagrass meadows
Avoid disturbance - advise keeping to main channels. **Navigate and anchor outside seagrass areas**

Saltstone
No Landing - Habitat vulnerable to trampling.

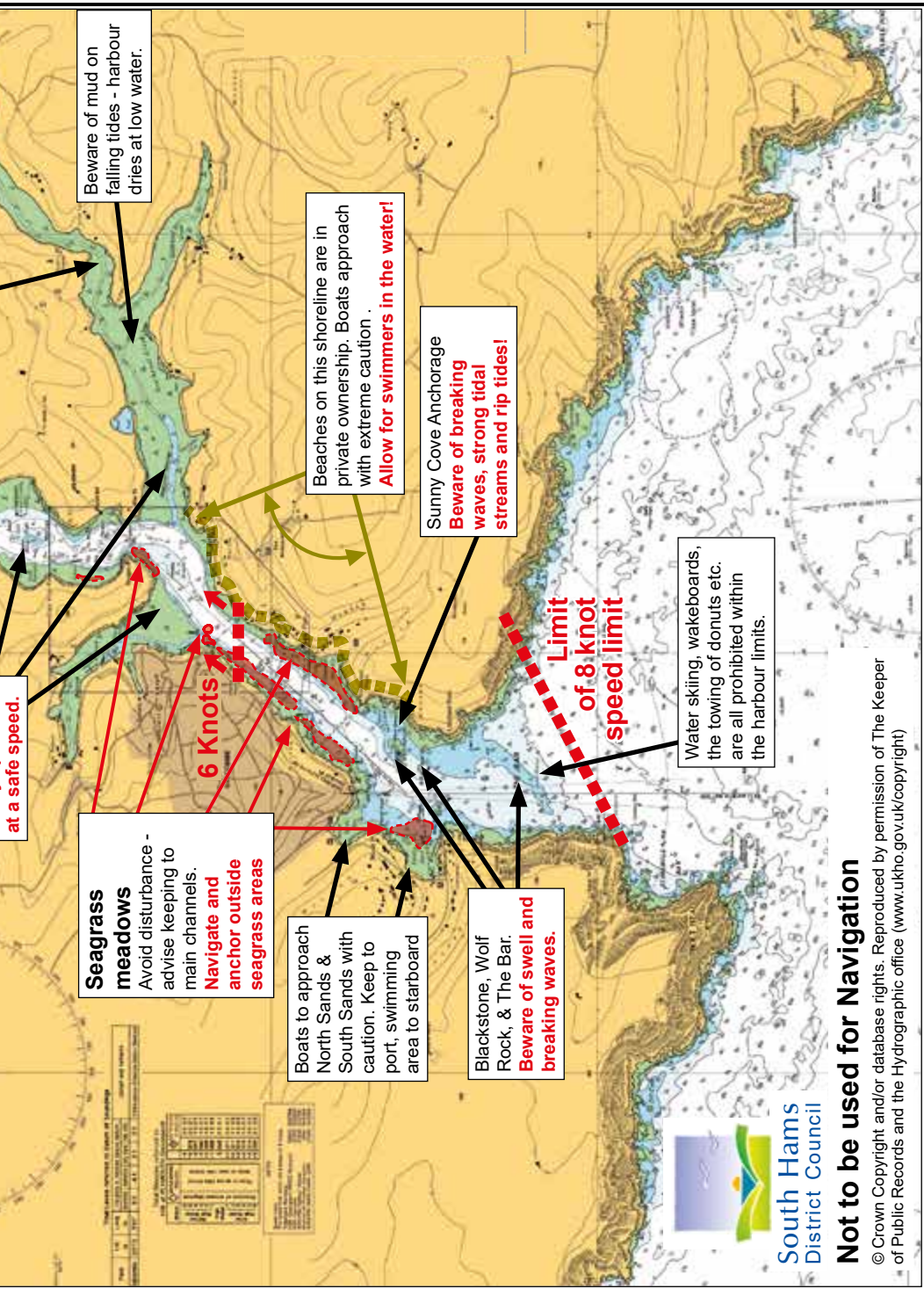
Watch your wake through moorings, **Always proceed**

Beware of mud on falling tides - harbour dries at low water.

Quiet areas - good bird watching but **Watch your wake.**

6 Knots

8 Knots
6 Knots



Beware of mud on falling tides - harbour dries at low water.

Beaches on this shoreline are in private ownership. Boats approach with extreme caution. **Allow for swimmers in the water!**

Sunny Cove Anchorage
Beware of breaking waves, strong tidal streams and rip tides!

Water skiing, wakeboards, the towing of donuts etc. are all prohibited within the harbour limits.

Limit of 8 knot speed limit

6 Knots

Seagrass meadows
Avoid disturbance - advise keeping to main channels. **Navigate and anchor outside seagrass areas**

Boats to approach North Sands & South Sands with caution. Keep to port, swimming area to starboard

Blackstone, Wolf Rock, & The Bar. **Beware of swell and breaking waves.**

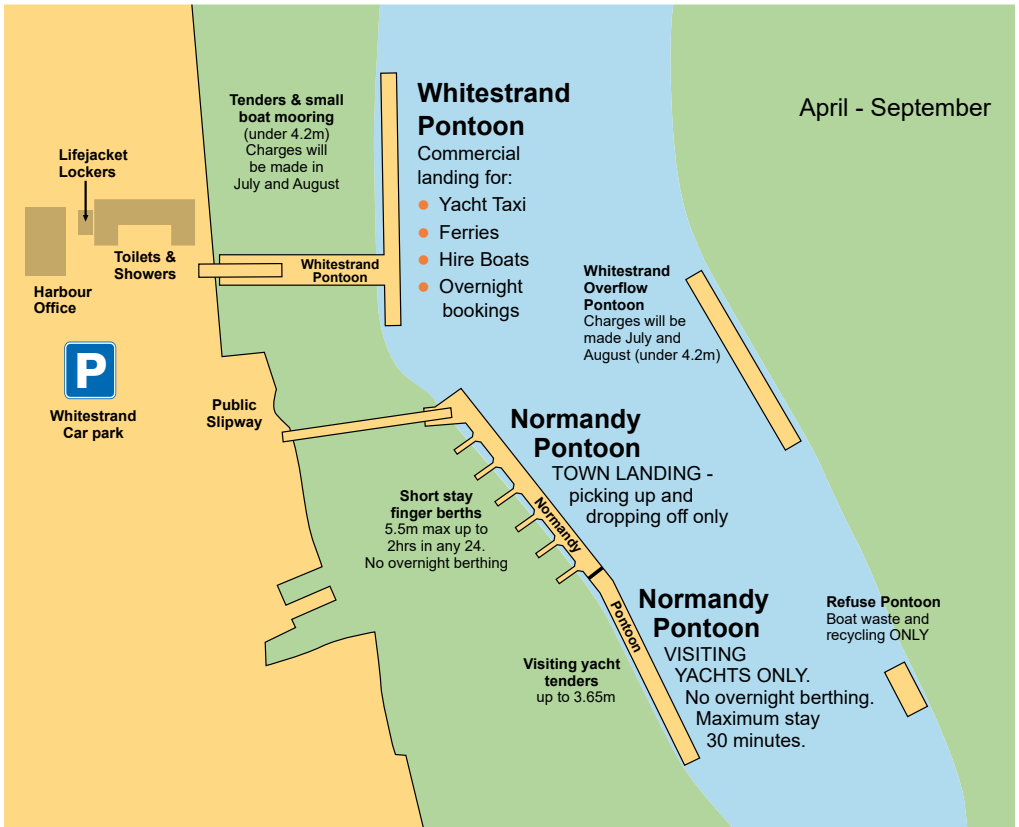
at a safe speed.



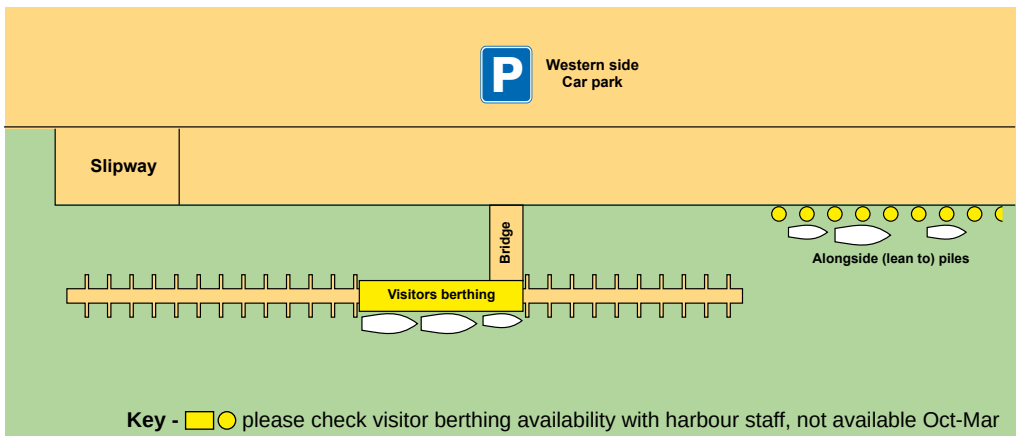
Not to be used for Navigation

© Crown Copyright and/or database rights. Reproduced by permission of The Keeper of Public Records and the Hydrographic office (www.ukho.gov.uk/copyright)

Salcombe Town Landings



Kingsbridge Town Landings





Prawle Point NCI - nci-prawlepoint.org.uk

NCI Watchkeepers provide eyes and ears along the coast, looking out for vulnerable craft at sea and walkers on the coast path. When people find themselves in trouble our highly trained volunteers work alongside HM Coastguard and other Search & Rescue organisations to offer assistance.

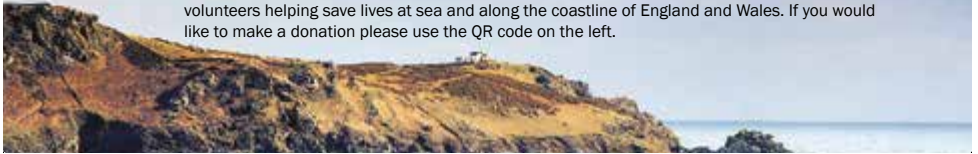


For mariners we provide:

- 2-hourly broadcasts on CH65 of current weather and sea conditions
- Radio and AIS checks - call 'Prawle Point NCI' on CH65
- Live weather and webcam updates on our website
- A visual, AIS and radar watch, every day of the year


As we provide comprehensive training, almost anyone with a love of the sea and a desire to help others can become a Watchkeeper. For more information visit nci-prawlepoint.org.uk/volunteer/

National Coastwatch Institution is a charity (Charity No. 1159975) staffed and managed by volunteers helping save lives at sea and along the coastline of England and Wales. If you would like to make a donation please use the QR code on the left.



EXPERIENCE
SALCOMBE
INFORMATION CENTRE

YOUR HIVE OF LOCAL KNOWLEDGE


ask directions, find local timetables, enquire where to eat, sleep, shop and play

KINGSBRIDGE SALCOMBE FERRY





Scheduled ferry service
Cruises: harbour/ creeks / coastal
Special events and exclusive charter enquiries are also very welcome

Occasional bar and light refreshments on board

Timetables and info available from website, Facebook, local tourist info centres and departure point notice boards

www.kingsbridgesalcombeferry.com

Salcombe tide-tables

January 2025

Time Zone UT (GMT)

Date	HEIGHTS ABOVE CHART DATUM							
	High Water				Low Water			
	Morning		Afternoon		Morning		Afternoon	
Time	m	Time	m	Time	m	Time	m	
1 W	06:49	4.9	19:13	4.7	00:32	1.2	12:57	1.1
2 TH	07:25	5.0	19:50	4.7	01:12	1.2	13:36	1.1
3 F	08:02	5.0	20:29	4.7	01:50	1.2	14:15	1.1
4 SA	08:41	4.5	21:10	4.6	02:29	1.2	14:55	1.1
5 SU	09:24	4.9	21:54	4.5	03:10	1.3	15:38	1.2
6 M	10:11	4.8	22:44	4.4	03:54	1.4	16:26	1.4
7 TU	11:04	4.7	23:41	4.4	04:45	1.6	17:23	1.6
8 W			12:06	4.5	05:47	1.7	18:32	1.7
9 TH	00:47	4.3	13:19	4.4	07:05	1.9	19:53	1.8
10 F	02:02	4.3	14:39	4.4	08:29	1.8	21:08	1.6
11 SA	03:18	4.5	15:55	4.5	09:41	1.6	22:10	1.4
12 SU	04:26	4.7	17:02	4.6	10:40	1.4	23:03	1.2
13 M	05:25	4.9	17:58	4.7	11:31	1.2	23:51	1.1
14 TU	06:14	5.0	18:45	4.8			12:18	1.0
15 W	06:57	5.1	19:24	4.8	00:34	1.0	13:00	1.0
16 TH	07:35	5.1	19:59	4.7	01:15	1.0	13:39	1.1
17 F	08:09	5.0	20:31	4.6	01:52	1.1	14:14	1.2
18 SA	08:40	4.9	21:01	4.5	02:26	1.2	14:46	1.3
19 SU	09:11	4.8	21:32	4.4	02:58	1.4	15:16	1.4
20 M	09:42	4.6	22:04	4.3	03:29	1.5	15:47	1.6
21 TU	10:15	4.5	22:42	4.2	04:02	1.7	16:22	1.7
22 W	10:56	4.3	23:30	4.1	04:40	1.9	17:05	1.9
23 TH	11:46	4.1			05:29	2.1	18:01	2.0
24 F	00:32	4.0	12:54	4.0	06:38	2.3	19:19	2.1
25 SA	01:55	4.0	14:24	4.0	08:09	2.3	20:47	2.1
26 SU	03:18	4.1	15:47	4.1	09:31	2.1	21:57	1.9
27 M	04:23	4.4	16:52	4.4	10:30	1.8	22:50	1.6
28 TU	05:16	4.6	17:44	4.6	11:19	1.5	23:37	1.3
29 W	06:00	4.9	18:27	4.8			12:02	1.2
30 TH	06:38	5.1	19:05	5.0	00:18	1.1	12:43	0.9
31 F	07:15	5.3	19:41	5.0	00:59	1.0	13:23	0.8

February 2025

Time Zone UT (GMT)

Date	HEIGHTS ABOVE CHART DATUM							
	High Water				Low Water			
	Morning		Afternoon		Morning		Afternoon	
Time	m	Time	m	Time	m	Time	m	
1 SA	07:51	5.3	20:16	5.0	01:38	0.9	14:02	0.7
2 SU	08:28	5.3	20:53	4.9	02:16	0.9	14:41	0.8
3 M	08:08	5.2	21:32	4.8	02:55	1.0	15:21	1.0
4 TU	09:50	5.0	22:15	4.6	03:36	1.1	16:04	1.1
5 W	10:37	4.7	23:05	4.4	04:21	1.4	16:53	1.5
6 TH	11:33	4.4			05:15	1.7	17:55	1.8
7 F	00:08	4.2	12:47	4.2	06:30	2.0	19:21	2.0
8 SA	01:30	4.1	14:22	4.1	08:06	2.0	20:49	2.0
9 SU	03:02	4.2	15:55	4.2	09:28	1.9	21:56	1.7
10 M	04:21	4.5	17:05	4.4	10:29	1.6	22:50	1.4
11 TU	05:20	4.8	17:55	4.7	11:19	1.3	23:36	1.2
12 W	06:05	5.0	18:34	4.8			12:03	1.1
13 TH	06:42	5.2	19:07	4.9	00:17	1.0	12:41	1.0
14 F	07:15	5.2	19:36	4.9	00:55	0.9	13:16	0.9
15 SA	07:44	5.2	20:03	4.9	01:29	0.9	13:48	1.0
16 SU	08:11	5.1	20:29	4.8	02:00	1.0	14:16	1.1
17 M	08:36	4.9	20:53	4.7	02:28	1.2	14:42	1.2
18 TU	09:02	4.8	21:20	4.5	02:55	1.3	15:09	1.3
19 W	09:30	4.6	21:51	4.4	03:23	1.5	15:39	1.5
20 TH	10:05	4.4	22:31	4.2	03:55	1.7	16:14	1.7
21 F	10:50	4.1	23:25	4.0	04:34	2.0	17:01	2.0
22 SA	11:52	3.9			05:31	2.2	18:12	2.2
23 SU	00:40	3.9	13:32	3.8	07:05	2.4	19:58	2.3
24 M	02:31	4.0	15:25	4.0	08:54	2.2	21:28	2.1
25 TU	03:54	4.3	16:35	4.3	10:06	1.8	22:28	1.7
26 W	04:52	4.6	17:26	4.7	10:57	1.4	23:16	1.3
27 TH	05:38	5.0	18:08	5.0	11:42	1.0		
28 F	06:18	5.3	18:45	5.2	00:00	1.0	12:24	0.7

March 2025

Time Zone UT (GMT)

Date	HEIGHTS ABOVE CHART DATUM							
	High Water				Low Water			
	Morning		Afternoon		Morning		Afternoon	
Time	m	Time	m	Time	m	Time	m	
1 SA	06:56	5.5	19:20	5.3	00:40	0.7	13:04	0.5
2 SU	07:33	5.5	19:55	5.3	01:20	0.6	13:43	0.5
3 M	08:10	5.4	20:31	5.2	01:59	0.6	14:22	0.6
4 TU	08:48	5.3	21:09	5.0	02:37	0.8	15:01	0.9
5 W	09:29	5.0	21:50	4.7	03:17	1.0	15:42	1.2
6 TH	10:14	4.6	22:38	4.4	04:00	1.4	16:27	1.6
7 F	11:09	4.2	23:40	4.1	04:51	1.7	17:26	2.0
8 SA			12:29	3.9	05:04	2.1	18:54	2.0
9 SU	01:10	4.0	14:19	3.9	07:51	2.2	20:32	2.1
10 M	02:51	4.1	15:52	4.1	09:17	2.0	21:41	1.8
11 TU	04:08	4.4	16:51	4.4	10:15	1.7	22:33	1.5
12 W	05:01	4.7	17:33	4.7	11:01	1.3	23:16	1.2
13 TH	05:41	5.0	18:08	4.9	11:41	1.1	23:55	1.0
14 F	06:15	5.1	18:38	5.0			12:17	0.9
15 SA	06:45	5.2	19:06	5.0	00:30	0.9	12:48	0.9
16 SU	07:13	5.2	19:32	5.0	01:02	0.9	13:18	0.9
17 M	07:39	5.1	19:56	4.9	01:32	1.0	13:45	1.0
18 TU	08:02	4.9	20:18	4.8	01:59	1.1	14:11	1.1
19 W	08:26	4.8	20:43	4.7	02:25	1.3	14:37	1.2
20 TH	08:53	4.6	21:12	4.5	02:51	1.5	15:05	1.4
21 F	09:26	4.4	21:50	4.3	03:21	1.6	15:38	1.7
22 SA	10:11	4.1	22:42	4.1	03:59	1.9	16:22	1.9
23 SU	11:16	3.9	23:56	3.9	04:53	2.1	17:27	2.2
24 M			12:58	3.8	06:21	2.3	19:13	2.4
25 TU	01:42	4.0	14:55	4.0	08:15	2.2	20:54	2.1
26 W	03:16	4.3	16:05	4.4	09:35	1.8	22:00	1.7
27 TH	04:18	4.7	16:56	4.8	10:30	1.3	22:50	1.3
28 F	05:07	5.1	17:39	5.1	11:17	0.9	23:36	0.9
29 SA	05:50	5.4	18:17	5.3			12:00	0.6
30 SU	06:31	5.5	18:55	5.4	00:18	0.6	12:41	0.5
31 M	07:11	5.5	19:31	5.4	00:59	0.5	13:22	0.5

April 2025

Time Zone UT (GMT)

Date	HEIGHTS ABOVE CHART DATUM							
	High Water				Low Water			
	Morning		Afternoon		Morning		Afternoon	
Time	m	Time	m	Time	m	Time	m	
1 TU	07:50	5.4	20:09	5.2	01:40	0.6	14:02	0.7
2 W	08:30	5.1	20:48	5.0	02:20	0.7	14:42	1.0
3 TH	09:12	4.8	21:31	4.7	03:01	1.1	15:23	1.3
4 F	09:59	4.4	22:21	4.4	03:45	1.4	16:09	1.7
5 SA	10:58	4.0	23:26	4.1	04:37	1.8	17:07	2.1
6 SU			12:24	3.8	05:50	2.2	18:31	2.3
7 M	00:55	4.0	14:06	3.8	07:34	2.2	20:09	2.2
8 TU	02:25	4.1	15:22	4.0	08:56	2.0	21:17	1.9
9 W	03:33	4.4	16:15	4.3	09:50	1.7	22:07	1.6
10 TH	04:23	4.7	16:56	4.6	10:34	1.4	22:49	1.3
11 F	05:03	4.9	17:31	4.9	11:11	1.1	23:27	1.1
12 SA	05:39	5.0	18:03	5.0	11:46	1.0		
13 SU	06:11	5.1	18:34	5.1	00:02	1.0	12:17	0.9
14 M	06:41	5.1	19:01	5.0	00:34	1.0	12:47	0.9
15 TU	07:08	5.0	19:26	4.9	01:04	1.1	13:15	1.0
16 W	07:33	4.8	19:49	4.8	01:32	1.2	13:43	1.1
17 TH	07:59	4.7	20:15	4.7	02:00	1.3	14:11	1.3
18 F	08:28	4.5	20:46	4.5	02:28	1.5	14:41	1.5
19 SA	09:04	4.3	21:25	4.4	03:00	1.6	15:16	1.7
20 SU	09:53	4.1	22:20	4.2	03:41	1.8	16:01	1.9
21 M	11:02	3.9	23:33	4.1	04:36	2.0	17:05	2.2
22 TU			12:34	3.9	05:56	2.1	18:37	2.3
23 W	01:03	4.2	14:12	4.1	07:36	2.0	20:14	2.1
24 TH	02:30	4.4	15:22	4.4	08:57	1.7	21:25	1.7
25 F	03:37	4.8	16:17	4.8	09:57	1.3	22:20	1.3
26 SA	04:32	5.1	17:04	5.1	10:48	0.9	23:09	0.9
27 SU	05:20	5.3	17:47	5.3	11:34	0.6	23:55	0.7
28 M	06:06	5.4	18:29	5.4			12:19	0.6
29 TU	06:50	5.4	19:10	5.3	00:39	0.6	13:01	0.6
30 W	07:33	5.2	19:52	5.2	01:22	0.6	13:44	0.8

For BST (British Summer Time) add 1 hour, Sun 30th March – Sat 25th October 2025



May 2025

Time Zone UT (GMT)

Date	HEIGHTS ABOVE CHART DATUM							
	High Water				Low Water			
	Morning		Afternoon		Morning		Afternoon	
Time	m	Time	m	Time	m	Time	m	
1 TH	08 17	4.9	20 34	5.0	02 06	0.9	14 26	1.1
2 F	09 03	4.6	21 20	4.7	02 49	1.2	15 09	1.4
3 SA	09 53	4.2	22 12	4.4	03 35	1.5	15 56	1.7
4 SU	10 54	4.0	23 15	4.2	04 27	1.8	16 50	2.0
5 M			23 10	3.8	05 32	2.1	18 02	2.2
6 TU	00 29	4.1	13 27	3.9	06 57	2.2	19 28	2.2
7 W	01 41	4.2	14 32	4.0	08 17	2.0	20 39	2.0
8 TH	02 42	4.3	15 25	4.3	09 13	1.8	21 32	1.7
9 F	03 34	4.5	16 10	4.5	09 57	1.5	22 16	1.5
10 SA	04 19	4.7	16 50	4.8	10 36	1.3	22 55	1.3
11 SU	04 59	4.8	17 28	4.9	11 12	1.1	23 32	1.2
12 M	05 37	4.9	18 02	5.0	11 46	1.1		
13 TU	06 11	4.9	18 34	4.9	00 06	1.2	12 18	1.1
14 W	06 43	4.8	19 02	4.9	00 39	1.2	12 51	1.1
15 TH	07 13	4.7	19 30	4.8	01 11	1.3	13 22	1.2
16 F	07 44	4.5	20 00	4.7	01 43	1.4	13 54	1.4
17 SA	08 19	4.4	20 35	4.6	02 15	1.5	14 27	1.5
18 SU	09 00	4.3	21 18	4.5	02 51	1.6	15 05	1.7
19 M	09 52	4.1	22 11	4.4	03 34	1.7	15 52	1.8
20 TU	10 54	4.1	23 16	4.3	04 27	1.8	16 51	2.0
21 W			12 07	4.1	05 36	1.8	18 06	2.0
22 TH	00 28	4.4	13 24	4.2	06 58	1.8	19 31	1.9
23 F	01 45	4.5	14 35	4.5	08 17	1.6	20 47	1.7
24 SA	02 55	4.7	15 36	4.7	09 23	1.3	21 50	1.3
25 SU	03 57	4.9	16 30	5.0	10 20	1.1	22 44	1.0
26 M	04 53	5.1	17 21	5.2	11 10	0.9	23 34	0.8
27 TU	05 46	5.2	18 09	5.2	11 58	0.8		
28 W	06 36	5.1	18 56	5.2	00 22	0.8	12 44	0.8
29 TH	07 24	5.0	19 41	5.1	01 08	0.8	13 28	0.9
30 F	08 11	4.7	20 27	4.9	01 54	1.0	14 12	1.1
31 SA	08 58	4.5	21 13	4.8	02 39	1.2	14 56	1.4

For BST (British Summer Time) add 1 hour, Sun 30th March – Sat 25th October 2025

June 2025

Time Zone UT (GMT)

Date	HEIGHTS ABOVE CHART DATUM							
	High Water				Low Water			
	Morning		Afternoon		Morning		Afternoon	
Time	m	Time	m	Time	m	Time	m	
1 SU	09 46	4.3	22 01	4.6	03 24	1.5	15 40	1.6
2 M	10 38	4.1	22 52	4.4	04 10	1.7	16 28	1.8
3 TU	11 34	4.0	23 48	4.3	05 01	1.9	17 21	2.0
4 W			12 34	4.0	05 00	2.0	18 26	2.1
5 TH	00 46	4.2	13 32	4.1	07 09	2.0	19 38	2.1
6 F	01 44	4.3	14 28	4.2	08 14	1.9	20 42	2.0
7 SA	02 39	4.3	15 20	4.4	08 08	1.7	21 35	1.8
8 SU	03 32	4.5	16 09	4.6	09 55	1.5	22 20	1.7
9 M	04 20	4.6	16 54	4.7	10 37	1.4	23 02	1.5
10 TU	05 06	4.6	17 35	4.8	11 17	1.3	23 41	1.4
11 W	05 48	4.6	18 13	4.8	11 55	1.3		
12 TH	06 28	4.6	18 47	4.8	00 18	1.4	12 32	1.3
13 F	07 05	4.6	19 20	4.8	00 55	1.4	13 08	1.3
14 SA	07 41	4.5	19 54	4.7	01 31	1.3	13 44	1.4
15 SU	08 18	4.4	20 31	4.7	02 07	1.4	14 20	1.5
16 M	08 59	4.4	21 12	4.7	02 45	1.4	14 59	1.5
17 TU	09 45	4.3	22 00	4.6	03 27	1.4	15 42	1.6
18 W	10 37	4.3	22 55	4.6	04 15	1.5	16 34	1.7
19 TH	11 36	4.3	23 57	4.6	05 12	1.6	17 35	1.8
20 F			12 41	4.3	06 20	1.7	18 50	1.8
21 SA	01 05	4.6	13 50	4.4	07 38	1.6	20 10	1.7
22 SU	02 18	4.6	14 59	4.6	08 52	1.5	21 22	1.5
23 M	03 29	4.7	16 04	4.8	09 55	1.3	22 24	1.3
24 TU	04 35	4.8	17 03	4.9	10 51	1.1	23 19	1.1
25 W	05 36	4.9	17 58	5.1	11 42	1.0		
26 TH	06 31	4.9	18 48	5.1	00 09	0.9	12 29	0.9
27 F	07 20	4.8	19 34	5.1	00 56	0.9	13 14	1.0
28 SA	08 05	4.7	20 17	5.0	01 41	1.0	13 57	1.1
29 SU	08 46	4.6	20 58	4.9	02 24	1.1	14 38	1.2
30 M	09 26	4.4	21 37	4.7	03 04	1.3	15 18	1.4

July 2025

Time Zone UT (GMT)

Date	HEIGHTS ABOVE CHART DATUM							
	High Water				Low Water			
	Morning		Afternoon		Morning		Afternoon	
Time	m	Time	m	Time	m	Time	m	
1 TU	10 05	4.3	22 16	4.6	03 43	1.5	15 56	1.6
2 W	10 46	4.2	22 58	4.4	04 21	1.7	16 36	1.8
3 TH	11 31	4.1	23 44	4.3	05 02	1.8	17 22	2.0
4 F			12 24	4.1	05 51	1.9	18 18	2.1
5 SA	00 37	4.2	13 24	4.1	06 51	2.0	19 28	2.2
6 SU	01 38	4.2	14 27	4.2	08 01	2.0	20 42	2.1
7 M	02 43	4.2	15 28	4.3	09 08	1.8	21 44	2.0
8 TU	03 46	4.3	16 24	4.5	10 04	1.7	22 35	1.8
9 W	04 44	4.4	17 14	4.6	10 52	1.5	23 20	1.6
10 TH	05 35	4.5	17 57	4.8	11 35	1.4		
11 F	06 20	4.6	18 36	4.8	00 01	1.4	12 16	1.3
12 SA	07 00	4.7	19 11	4.9	00 40	1.3	12 55	1.3
13 SU	07 36	4.7	19 45	5.0	01 19	1.2	13 32	1.2
14 M	08 11	4.7	20 21	5.0	01 56	1.1	14 09	1.2
15 TU	08 48	4.6	21 00	5.0	02 34	1.1	14 47	1.3
16 W	09 28	4.6	21 43	4.9	03 13	1.2	15 27	1.3
17 TH	10 12	4.5	22 31	4.8	03 56	1.3	16 12	1.5
18 F	11 03	4.4	23 26	4.6	04 46	1.4	17 06	1.6
19 SA			12 02	4.3	05 46	1.6	18 14	1.8
20 SU	00 32	4.4	13 13	4.3	07 02	1.8	19 40	1.9
21 M	01 51	4.3	14 33	4.4	08 26	1.8	21 03	1.7
22 TU	03 16	4.4	15 50	4.6	09 38	1.6	22 11	1.5
23 W	04 32	4.5	16 57	4.8	10 37	1.4	23 07	1.2
24 TH	05 36	4.7	17 53	5.0	11 29	1.1	23 57	1.0
25 F	06 28	4.8	18 40	5.2			12 15	1.0
26 SA	07 11	4.9	19 21	5.2	00 42	0.9	12 58	0.9
27 SU	07 48	4.8	19 57	5.2	01 23	0.9	13 38	0.9
28 M	08 21	4.8	20 31	5.0	02 01	1.0	14 15	1.0
29 TU	08 53	4.6	21 02	4.9	02 36	1.2	14 48	1.2
30 W	09 23	4.5	21 33	4.7	03 07	1.3	15 20	1.4
31 TH	09 54	4.4	22 05	4.5	03 38	1.5	15 52	1.6

For BST (British Summer Time) add 1 hour, Sun 30th March – Sat 25th October 2025

August 2025

Time Zone UT (GMT)

Date	HEIGHTS ABOVE CHART DATUM							
	High Water				Low Water			
	Morning		Afternoon		Morning		Afternoon	
Time	m	Time	m	Time	m	Time	m	
1 F	10 29	4.3	22 42	4.3	04 11	1.6	16 28	1.8
2 SA	11 12	4.1	23 28	4.2	04 49	1.8	17 12	2.1
3 SU			12 08	4.0	05 39	2.0	18 12	2.3
4 M	00 29	4.0	13 24	4.0	06 49	2.1	19 36	2.3
5 TU	01 54	3.9	14 48	4.1	08 16	2.1	21 06	2.2
6 W	03 21	4.1	15 58	4.3	09 33	2.0	22 10	1.9
7 TH	04 29	4.3	16 54	4.5	10 30	1.7	22 59	1.6
8 F	05 23	4.5	17 39	4.8	11 16	1.5	23 42	1.3
9 SA	06 07	4.7	18 18	5.0	11 59	1.2		
10 SU	06 45	4.9	18 54	5.1	00 22	1.1	12 38	1.1
11 M	07 19	5.0	19 28	5.2	01 01	0.9	13 16	1.0
12 TU	07 52	5.0	20 03	5.2	01 39	0.8	13 53	0.9
13 W	08 27	4.9	20 41	5.2	02 16	0.8	14 30	1.0
14 TH	09 04	4.8	21 21	5.0	02 54	1.0	15 09	1.1
15 F	09 45	4.7	22 06	4.8	03 35	1.2	15 51	1.3
16 SA	10 32	4.5	22 59	4.5	04 20	1.4	16 41	1.6
17 SU	11 31	4.3			05 17	1.8	17 47	1.9
18 M	00 08	4.2	12 48	4.2	06 35	2.0	19 20	2.0
19 TU	01 41	4.1	14 22	4.2	08 09	2.0	20 54	1.9
20 W	03 20	4.2	15 47	4.4	09 26	1.8	22 02	1.6
21 TH	04 36	4.4	16 52	4.8	10 25	1.5	22 55	1.3
22 F	05 31	4.7	17 42	5.0	11 14	1.2	23 41	1.0
23 SA	06 13	4.9	18 22	5.2	11 57	0.9		
24 SU	06 49	5.0	18 57	5.3	00 22	0.9	12 37	0.8
25 M	07 20	5.0	19 28	5.2	00 59	0.8	13 13	0.8
26 TU	07 48	4.9	19 57	5.1	01 33	0.9	13 46	0.9
27 W	08 15	4.8	20 24	5.0	02 03	1.0	14 16	1.1
28 TH	08 40	4.7	20 49	4.8	02 30	1.1	14 44	1.3
29 F	09 06	4.6	21 17	4.6	02 57	1.3	15 12	1.5
30 SA	09 37	4.4	21 49	4.3	03 26	1.5	15 42	1.7
31 SU	10 15	4.2	22 33	4.1	03 59	1.7	16 20	2.0



September 2025

Time Zone UT (GMT)

Date	HEIGHTS ABOVE CHART DATUM							
	High Water				Low Water			
	Morning		Afternoon		Morning		Afternoon	
Time	m	Time	m	Time	m	Time	m	
1 M	11 06	4.0	23 33	3.9	04 43	2.0	17 12	2.2
2 TU			12 19	3.9	05 47	2.3	18 36	2.4
3 W	01 08	3.8	14 05	3.9	07 25	2.3	20 26	2.3
4 TH	03 00	3.9	15 29	4.2	09 02	2.2	21 43	2.0
5 F	04 10	4.3	16 27	4.5	10 05	1.8	22 35	1.5
6 SA	05 02	4.6	17 13	4.9	10 53	1.5	23 19	1.1
7 SU	05 43	4.9	17 53	5.2	11 36	1.1		
8 M	06 20	5.1	18 29	5.3	00 00	0.8	12 16	0.9
9 TU	06 54	5.2	19 06	5.4	00 39	0.7	12 55	0.7
10 W	07 28	5.2	19 42	5.4	01 17	0.6	13 33	0.7
11 TH	08 03	5.2	20 20	5.4	01 56	0.7	14 11	0.8
12 F	08 40	5.0	21 01	5.0	02 34	0.9	14 51	1.0
13 SA	09 21	4.8	21 46	4.6	03 14	1.2	15 33	1.3
14 SU	10 09	4.5	22 41	4.3	03 59	1.5	16 23	1.7
15 M	11 10	4.2	23 59	4.0	04 55	1.9	17 31	2.0
16 TU			12 37	4.1	06 16	2.2	19 11	2.2
17 W	01 48	3.9	14 18	4.2	07 57	2.2	20 46	2.0
18 TH	03 22	4.1	15 38	4.4	09 13	1.9	21 49	1.6
19 F	04 24	4.4	16 34	4.8	10 08	1.5	22 37	1.3
20 SA	05 09	4.7	17 17	5.0	10 54	1.2	23 19	1.0
21 SU	05 45	4.9	17 53	5.2	11 35	0.9	23 56	0.9
22 M	06 17	5.1	18 25	5.3	12 12	0.8	12 12	0.8
23 TU	06 46	5.1	18 55	5.2	00 30	0.8	12 45	0.8
24 W	07 14	5.1	19 22	5.1	01 01	0.8	13 16	0.9
25 TH	07 39	5.0	19 47	4.9	01 30	0.9	13 45	1.1
26 F	08 03	4.8	20 11	4.7	01 56	1.1	14 11	1.3
27 SA	08 27	4.7	20 36	4.5	02 22	1.2	14 38	1.5
28 SU	08 55	4.5	21 08	4.3	02 50	1.5	15 07	1.7
29 M	09 32	4.3	21 51	4.1	03 22	1.7	15 43	1.9
30 TU	10 22	4.1	22 55	3.8	04 02	2.0	16 33	2.1

For BST (British Summer Time) add 1 hour, Sun 30th March – Sat 25th October 2025

October 2025

Time Zone UT (GMT)

Date	HEIGHTS ABOVE CHART DATUM							
	High Water				Low Water			
	Morning		Afternoon		Morning		Afternoon	
Time	m	Time	m	Time	m	Time	m	
1 W	11 34	3.9			05 02	2.2	17 51	2.3
2 TH	00 32	3.7	13 14	3.9	06 36	2.4	19 41	2.3
3 F	02 29	3.9	14 48	4.2	08 22	2.2	21 07	1.9
4 SA	03 38	4.3	15 50	4.6	09 33	1.9	22 04	1.5
5 SU	04 29	4.7	16 39	4.9	10 25	1.4	22 51	1.0
6 M	05 11	5.0	17 22	5.2	11 10	1.0	23 34	0.7
7 TU	05 50	5.2	18 02	5.4	11 52	0.8		
8 W	06 27	5.3	18 42	5.5	00 15	0.6	12 33	0.6
9 TH	07 04	5.4	19 22	5.4	00 55	0.5	13 14	0.6
10 F	07 42	5.2	20 03	5.1	01 36	0.7	13 55	0.7
11 SA	08 21	5.0	20 46	4.8	02 16	0.9	14 36	1.0
12 SU	09 05	4.8	21 35	4.4	02 58	1.3	15 21	1.4
13 M	09 56	4.5	22 35	4.1	03 45	1.6	16 14	1.7
14 TU	11 02	4.2			04 42	2.0	17 22	2.0
15 W	00 00	3.9	12 28	4.1	06 01	2.2	18 58	2.2
16 TH	01 41	3.9	13 58	4.2	07 36	2.2	20 27	2.0
17 F	02 57	4.1	15 07	4.4	08 50	1.9	21 25	1.7
18 SA	03 51	4.4	15 59	4.7	09 43	1.6	22 11	1.3
19 SU	04 33	4.7	16 41	4.9	10 28	1.3	22 50	1.0
20 M	05 09	4.9	17 17	5.1	11 07	1.0	23 27	0.9
21 TU	05 42	5.0	17 51	5.1	11 44	0.9		
22 W	06 13	5.1	18 22	5.1	00 00	0.9	12 18	0.9
23 TH	06 42	5.1	18 51	5.0	00 31	0.9	12 48	1.0
24 F	07 09	5.0	19 17	4.8	01 00	1.0	13 18	1.2
25 SA	07 34	4.8	19 43	4.6	01 28	1.1	13 46	1.3
26 SU	07 59	4.7	20 11	4.4	01 56	1.3	14 14	1.5
27 M	08 28	4.5	20 44	4.3	02 25	1.5	14 45	1.6
28 TU	09 06	4.4	21 30	4.0	02 58	1.7	15 22	1.8
29 W	09 56	4.2	22 35	3.9	03 39	1.9	16 12	2.0
30 TH	11 04	4.1			04 36	2.2	17 22	2.1
31 F	00 00	3.8	12 27	4.1	05 58	2.3	18 55	2.1

November 2025

Time Zone UT (GMT)

Date	HEIGHTS ABOVE CHART DATUM							
	High Water				Low Water			
	Morning		Afternoon		Morning		Afternoon	
Time	m	Time	m	Time	m	Time	m	
1 SA	01 38	4.0	13 55	4.3	07 34	2.2	20 22	1.8
2 SU	02 52	4.3	15 05	4.6	08 52	1.9	21 27	1.4
3 M	03 48	4.6	16 02	4.9	09 52	1.5	22 20	1.1
4 TU	04 36	5.0	16 52	5.2	10 42	1.1	23 08	0.8
5 W	05 20	5.2	17 38	5.3	11 29	0.8	23 53	0.6
6 TH	06 02	5.3	18 23	5.3			12 14	0.7
7 F	06 44	5.3	19 08	5.2	00 36	0.6	12 58	0.7
8 SA	07 27	5.2	19 53	5.0	01 20	0.8	13 42	0.8
9 SU	08 11	5.1	20 40	4.7	02 03	1.0	14 27	1.0
10 M	08 58	4.8	21 32	4.4	02 47	1.3	15 14	1.4
11 TU	09 51	4.6	22 32	4.1	03 35	1.6	16 06	1.7
12 W	10 52	4.3	23 46	3.9	04 29	1.9	17 07	1.9
13 TH			12 04	4.2	05 35	2.1	18 25	2.1
14 F	01 02	3.9	13 16	4.2	06 56	2.1	19 46	2.0
15 SA	02 08	4.1	14 19	4.4	08 11	2.0	20 48	1.8
16 SU	03 02	4.3	15 12	4.5	09 08	1.7	21 36	1.5
17 M	03 49	4.5	15 58	4.7	09 56	1.5	22 17	1.3
18 TU	04 30	4.7	16 40	4.8	10 37	1.3	22 55	1.1
19 W	05 09	4.9	17 19	4.9	11 16	1.2	23 30	1.1
20 TH	05 44	5.0	17 55	4.9	11 51	1.2		
21 F	06 18	5.0	18 29	4.8	00 04	1.0	12 25	1.2
22 SA	06 48	4.9	19 00	4.7	00 36	1.1	12 57	1.3
23 SU	07 17	4.8	19 30	4.5	01 08	1.2	13 29	1.4
24 M	07 45	4.7	20 02	4.4	01 40	1.3	14 01	1.5
25 TU	08 17	4.6	20 39	4.3	02 11	1.5	14 34	1.5
26 W	08 55	4.5	21 24	4.1	02 46	1.6	15 12	1.6
27 TH	09 42	4.4	22 20	4.1	03 26	1.8	15 58	1.7
28 F	10 40	4.3	23 27	4.0	04 17	1.9	16 57	1.8
29 SA	11 47	4.3			05 22	2.1	18 11	1.9
30 SU	00 41	4.1	13 02	4.4	06 43	2.1	19 34	1.8

December 2025

Time Zone UT (GMT)

Date	HEIGHTS ABOVE CHART DATUM							
	High Water				Low Water			
	Morning		Afternoon		Morning		Afternoon	
Time	m	Time	m	Time	m	Time	m	
1 M	01 57	4.3	14 18	4.6	08 07	1.9	20 49	1.5
2 TU	03 03	4.5	15 25	4.8	09 18	1.6	21 50	1.3
3 W	04 02	4.8	16 26	5.0	10 17	1.2	22 44	1.0
4 TH	04 55	5.0	17 21	5.1	11 10	1.0	23 34	0.8
5 F	05 45	5.2	18 13	5.1	11 59	0.8		
6 SA	06 34	5.3	19 03	5.0	00 21	0.8	12 46	0.8
7 SU	07 21	5.2	19 51	4.9	01 07	0.8	13 33	0.8
8 M	08 07	5.1	20 38	4.7	01 52	1.0	14 18	1.0
9 TU	08 53	5.0	21 26	4.5	02 36	1.2	15 04	1.2
10 W	09 40	4.8	22 15	4.3	03 21	1.4	15 50	1.5
11 TH	10 29	4.6	23 08	4.1	04 07	1.7	16 39	1.7
12 F	11 22	4.4			04 58	1.9	17 34	1.9
13 SA	00 04	4.0	12 18	4.3	05 58	2.0	18 38	2.0
14 SU	01 04	4.0	13 18	4.2	07 07	2.1	19 47	1.9
15 M	02 03	4.1	14 16	4.3	08 18	2.0	20 48	1.8
16 TU	02 58	4.3	15 12	4.4	09 16	1.9	21 38	1.6
17 W	03 50	4.5	16 04	4.5	10 06	1.7	22 23	1.5
18 TH	04 38	4.6	16 52	4.6	10 49	1.6	23 04	1.3
19 F	05 22	4.8	17 37	4.6	11 29	1.4	23 42	1.3
20 SA	06 01	4.8	18 17	4.6			12 07	1.4
21 SU	06 37	4.9	18 54	4.6	00 19	1.2	12 42	1.3
22 M	07 09	4.8	19 28	4.6	00 54	1.3	13 17	1.3
23 TU	07 39	4.8	20 01	4.5	01 29	1.3	13 51	1.3
24 W	08 11	4.8	20 36	4.5	02 02	1.4	14 25	1.3
25 TH	08 47	4.7	21 15	4.4	02 37	1.5	15 02	1.4
26 F	09 28	4.7	22 00	4.3	03 14	1.5	15 43	1.4
27 SA	10 16	4.6	22 52	4.3	03 58	1.6	16 31	1.5
28 SU	11 11	4.5	23 53	4.2	04 50	1.8	17 31	1.7
29 M			12 17	4.5	05 57	1.9	18 46	1.8
30 TU	01 03	4.3	13 34	4.4	07 21	1.9	20 10	1.7
31 W	02 21	4.4	14 55	4.5	08 46	1.8	21 25	1.5

© Crown Copyright and/or database rights. Reproduced by permission of the Controller of Her Majesty's Stationery Office and the UK Hydrographic Office (www.GOV.uk/UKHO)



Lifeboats

YOUR LIFE IS PRECIOUS

Always wear your lifejacket

**USELESS
UNLESS
WORN**

Find out more at
RNLI.org/Sailing

The RNLI is the charity that saves lives at sea
Royal National Lifeboat Institution, a charity registered in England
and Wales (209603) and Scotland (SC037736). Registered charity
number 20003326 in the Republic of Ireland

Photo: Shutterstock.com

**RESPECT
THE WATER**





THE WIND PROJECT

The Wind Project is a Charitable Community Benefit Society and provides Sailing experiences on the Kingsbridge & Salcombe Estuary for 10 surrounding Primary Schools as well as people with learning disabilities and difficulties.



For more information

Email
info@thewindproject.co.uk
 or call
 07809 556457

- We engage with local schools and colleges to promote sailing as an enjoyable activity which anyone can participate in, whatever their background, helping to tackle inequality of opportunity.
- We are developing sailing qualifications, improving young people's employability and skills.
- Offering Sailing lessons for adults living locally with disabilities.
- We support local people to develop new skills by volunteering with us.
- We are helping to raise awareness of the many career opportunities in the marine industry, which will have a positive impact on the local and wider economy.



Being on the sea and sailing has so many benefits

Interacting with the elements, gaining fresh air and exercise, working with others as a team, being water confident and capable of understanding boats, tides, navigation, the weather, to name but a few.

The Wind Project wants to make the joys and benefits of sailing more accessible to as many as possible.



≡ Looking to buy or sell a boat?

Contact our Salcombe office today!



New Boat Sales | Used Boat Sales | Yacht Maintenance

McCONAGHY



BLUEGAME



Andy Christie
Your Local Ancasta Broker

+44 (0)1548 727 130

[ancasta.com/Salcombe](https://www.ancasta.com/Salcombe)

CLARK CARS
OF SALCOMBE

THE
SALCOMBE
TAXI
SERVICE

Up to 6
Passengers



07976 551532



01548 842914

redhotvinyls@yahoo.co.uk

Marine Insurance

Specialist cover for Leisure
& Commercial Marine Insurance

- ✓ Yacht
- ✓ Cruiser
- ✓ RIB
- ✓ Sport
- ✓ Sailing
- ✓ Dinghy



SABRE
INSURANCE SERVICES

Sabre Insurance Services
Telephone: 01548 852853

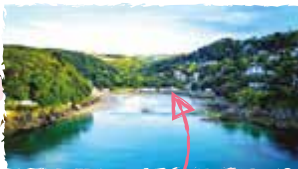
www.boatquote.co.uk



THE
Winking Prawn

BEACH CAFE - SALCOMBE

CHECK
WEBSITE FOR
SEASONAL
VARIATIONS



Famously Nestled
at the beautiful
North Sands



SCAN
FOR
WEBSITE



WWW.WINKINGPRAWN.COM ~ 01548 842326 ~ TQ8 8LD



DEVON BOAT CENTRE



SALES • BROKERAGE • STORAGE
SERVICE • REPAIRS • TRANSPORT



BOAT SALES Selection of RIBs, Sportsboats, Cruisers, Day/Fishing Boats (some craft on the water).

Viewing by appointment please

BROKERAGE & PURCHASE

Free collection and storage for all brokerage boats (we also purchase outright)

INDOOR STORAGE & MOORINGS

We have alarmed indoor storage and pontoon moorings available

SERVICE & REPAIRS We service and repair all makes of inboard and

outboard engines plus trailer repairs

BOAT TRANSPORT We deal with the movement of powerboats up to a gross weight of 3500kg

CALL 01548 857444

OR 07857 788422

email sales@devonboatcentre.co.uk

www.devonboatcentre.co.uk

Terms and conditions apply

Salcombe Sea School



RYA POWERBOAT LEVEL 2 COURSE

GIVING YOU CONFIDENCE ON THE WATER
NO EXPERIENCE NECESSARY

PERSONALISED OWN BOAT TUITION AVAILABLE



07866 180180

chris@salcombeseaschool.com

www.salcombeseaschool.com

BATSON CREEK MARINE

COMPLETE CARE FOR YOUR BOAT

At Batson Creek Marine, our team offers comprehensive marine services with expert care and attention to detail, ensuring your boat is in the best hands.

- Secure Storage to protect your boat
- Servicing & Maintenance for all makes & models
- Launch & Recovery services for hassle-free boating
- Mooring solutions in Salcombe Estuary
- Cleaning & Anti-fouling
- Trailer Storage for convenient boat management
- Specialists in GRP Repairs & Plymouth Pilot Refits

Our commitment is simple:
We care about you & your boat!

TEL: 07432 120140

EMAIL: CHRIS.BATSONCREEK@GMAIL.COM

WWW.BATSON-CREEK.COM

THE WOLF ROCK BOAT COMPANY

+44 (0) 1548 855751 | WWW.THEWOLFROCK.CO.UK
UNIT 1G, SOUTH HAMS BUSINESS PARK, CHURCHSTOW, DEVON, TQ7 3QH



ADVENTURES START NOW



FITTED WITH
GARMIN.
ELECTRONICS



BRIG
RIGID INTELLIGENT BOATS

IRON
BOATS

GALA
INFLATABLE BOATS

“ A veritable treasure trove of Salcombe's maritime past... ”



SALCOMBE MARITIME MUSEUM

FREE ENTRY!

Explore Salcombe's shipbuilding past, shipwreck displays, historic photographs, paintings, models and much, much more...

OPEN APRIL TO OCTOBER

10.30am - 12.30pm

2.30pm - 4.30pm

Market Street, below the
Salcombe Information Centre

Registered charity no. 1203233



www.salcombemuseum.org.uk



**New and used boat sales — Servicing — Repair
Moorings — Storage — Fuel — Brokerage**

Arksen

WHITE SHARK
POWER BOATS SINCE 1978

BOSTON WHALER

ZODIAC

YAMAHA

YAMARIN



Yeowards Boatyards

01548 844 261 www.yeowards.com




RYA POWERBOAT TRAINING COURSES **FAST, SLOW AND CROUSE RIB RIDES**




SKIPPED RIB CHARTER **RIB COASTEERING**

WITH WATER SPORTS




sea-n-shore.com
RYA POWERBOAT TRAINING & WATERSPORTS

ali@sea-n-shore.com 01548 842276 07713 745609




SALCOMBE LAUNCH CO



SELF-DRIVE BOAT HIRE
£195 PER DAY (CALL FOR MULTI DAY PRICES)

- Personal Handover & Introduction
- Private Moorings
- Full Safety Equipment & Video Tutorials



info@salcombelaunchcompany.com 079271 64939
www.salcombelaunchcompany.com

Salcombe D.I.Y and Hardware

- Gardening ● Plumbing bits ● Toys ● Beach Items
- Camping ● Electrical Goods ● Locks ● Chandlery ● Gas
- Fishing Tackle ● Key cutting service ● DIY ● Hardware

Salcombe DIY

Island Street, Salcombe TQ8 8DP Tel: 01548 843623

THE BOAT STORE

SALCOMBE



CHANDLERY • CLOTHING • LIFEJACKETS • FOOTWEAR
WETSUITS • WATERSPORTS EQUIPMENT

📍 @salcombeboatstore

Island Street Salcombe TQ8 8DP 01548 843708



Frogmore Marine Services Ltd



Inside & Outside storage
GRP & General boat repairs
Marine Engineering Inboard & outboard
New boat sales

Email: tamsin@frogmore.uk.net

Tel: 01548 531257

The Office: Frogmore Boat Yard,
Frogmore, Devon TQ7 2NU





*Many decades of experience
in the fabrication, repair and construction
of GRP & composite structures*

**All Repairs & Maintenance | Insurance Repairs
Coatings Above & Below the Waterline
Keels & Rudders | Bespoke Stainless Steel Work
Skin Fittings and much more**



WE HAVE MOVED: Dolphin Boatyard, Galmpton, TQ5 0EH

Tel: 01803 867 474 | **Email:** dave@dartsideboatworks.co.uk | **Web:** dartsideboatworks.co.uk



ISLAND CRUISING CLUB
SALCOMBE, DEVON

**ON THE WATER FROM
£500/YR + MEMBERSHIP**



**USE OF RIB - HAWK 20
SOLING - SQUIB KEELBOATS
20' MOTOR LAUNCH**

07481 896183

www.islandcruisingclub.com



Tim Beck

Marine Gas Services

-Gas Safety Checks

-Cooker Servicing

-Complete LPG Installations

-Gas Alarm Fitting

-Propex Heaters

**-Refrigeration
Service and Repair**



503086

www.timbeck.co.uk

t: 07876 244036

e: info@timbeck.co.uk

TWISTED

THE BEST. MADE BETTER.

Experience world-class service and maintenance as main agents for Volvo Penta, Honda, Mercury, and Yanmar. Proud builders of the iconic Scorpion RIBs and UK distributors for Northstar Boats, we offer unrivalled craftsmanship and innovation. Looking to buy or sell? Our hassle-free brokerage service ensures a seamless process from start to finish.



START YOUR ADVENTURE | CALL 01548 843 655



HONDA
MARINE



VOLVO
PENTA



YANMAR



MERCURY



Paddle Board and Kayak Hire/Sales

From £17.50/day



10'6" All-round iSUP
12'6" Touring iSUP
8' Kids All-round iSUP
2 man inflatable kayaks
1 man rigid kayaks
Body boards

Rental Prices From

1 Day - £40
2 Days - £65
3 Days - £80
4 Days - £95
5 Days - £105
6 Days - £105



☎ 07838 394835 ✉ info@northsands.co.uk



www.northsands.co.uk



Love the Sea Gallery Salcombe Nick Philbidge

Salcombe, Sailing and love of the Sea



Love the Sea showcases the original & often impressionistic images of marine photographer & working artist Nick Philbidge. Combining photography & freediving with one breath of air, sharing a passion for Salcombe, Sailing & love of the Sea.



Our gallery will flavour your home with Salcombe coastal living. A blend of nautical pictures & New England style, from stunning lighthouses to cosy sea colour throws. Call Nick or Tina: 01548 844691 / 07710 932482. 53a Fore Street, Salcombe TQ8 8JE or Ferry steps. www.nickphilbidge.com

Salcombe Marine Electrical Services



ADAM CARDEW

FAULT FINDING
REPAIRS
INSTALLATIONS

SALCOMBE &
SURROUNDING AREAS

Tel: 07812028637

Email: salcombemarineelectrical@hotmail.com



Looking to buy or sell a boat?

Contact our Salcombe office today!



Ancasta

New Boat Sales | Used Boat Sales | Yacht Maintenance

McCONAGHY



BLUEGAME



Andy Christie
Your Local Ancasta Broker

+44 (0)1548 727 130

[ancasta.com/Salcombe](https://www.ancasta.com/Salcombe)

INFO@SALCOMBEWATERSPORTS.COM
01548 944142



SALCOMBE
WATERSPORTS

WWW.SALCOMBEWATERSPORTS.COM
BOOK ONLINE TODAY



STAND UP PADDLEBOARDING | KAYAKING | RYA WINDSURFING | RYA POWERBOAT LEVEL 2
LEARN | HIRE | EXPLORE | SAFETY BOAT | FAMILIES WELCOME
WEEKLY SUMMER KIDS' CLUB | HOLIDAY MULTI-ACTIVITY DAYS



SALCOMBE
FISHING ADVENTURES



FAMILY SEA FISHING FUN
2HR TRIPS FROM £30PP

BOOK ONLINE : WWW.SALCOMBEFISHING.CO.UK



BOOK TRIPS





**STONES
BOATYARD**

YETI

AUTHORISED DEALER



Scan to shop online



**The UK's biggest YETI stockist,
offering a huge range of
YETI coolers, Rambler drinkware, accessories and much more.**

Showroom open Mon - Fri 9 am - 5 pm
Yalton, East Portlemouth, TQ8 8PA. 01548 844122

Daily service across the Salcombe Ferry. Salcombe to East Portlemouth.
Giving access to coastal paths, coves and sandy beaches
& a short walk to our Showroom from the ferry steps.



casual dining ~ seafood dishes ~ family friendly ~ dog friendly



South Sands

SALCOMBE

01548 845900
SALCOMBE | BOLT HEAD | TQ8 8LL
WWW.SOUTHSANDS.COM



Customer car park ~ walk/catch South Sands Ferry to/from Salcombe ~ come by boat!

HARBOUR

Beach Club

HOTEL & SPA

Laidback Beach Club Bar + Restaurant

Steps from the beach, serving fresh seafood, British classics and local drinks.

Beach Club Spa

Open to non-residents for spa days and treatments inspired by the ocean.

South Sands, Salcombe TQ8 8LJ
beachclub@harbourhotels.co.uk | 01548 233 456
harbourhotels.co.uk/harbour-beach-club

South Sands, Salcombe TQ8 8LJ



Escape the
hustle &
unwind at our
Beach Club
on the
South Sands



SALCOMBE RIGGING SERVICES



UNIT 2, Schooner Court, Gould Road, Salcombe, TQ8 8FQ

07944 197721

info@salcomberiggingsservices.com

www.salcomberiggingsservices.com



HARKEN



SELDEN

STA-LOK

spinlock

Marlow

DINGHY RE-FITS

SAILING SYSTEM UPGRADES

MAST & RIGGING INSPECTIONS

STANDING & RUNNING RIGGING

RUNNING RIGGING INSPECTIONS

SAIL REMOVAL, SERVICE, REPAIRS AND LAUNDRY

BESPOKE SPLICING AND MOORING LINE PACKAGES

WINCH, DECK GEAR AND FURLING SYSTEM SERVICE




| Annual deep-water moorings | 30T hoist | Hard standing & undercover storage | Shore power |
 | GRP & wood repairs | Seasonal dinghy & car parking | Engineering & electronics |




01548 843580 | info@wintersmarine.co.uk | Winters Marine, Lincombe Boatyard, TQ8 8NQ | www.wintersmarine.co.uk

AP MARINE SURVEYS
 Yachts and Motor Craft




- Pre-Purchase & Insurance Surveys
- Valuations & Tonnage Measurements
- Damage Assessment
- MCA Code Compliance 'Level-2'
- Engine & Drive Inspections
- Accompanied Viewings
- General Consultancy



Alan Plummer
 Karenza
 Grenville Road
 Salcombe
 Devon
 TQ8 8BJ
 01548 843552
 07557 145566

www.apmarinesurveys.co.uk
alan@apmarinesurveys.co.uk



YDSA
 PROFESSIONAL YACHT
 DESIGNERS & SURVEYORS
 ACCREDITED
 MEMBER



South Hams
 District Council

Salcombe Harbour Authority
Batson - Winter storage
October to April

- Environmentally friendly hull scrubbing facility
- Emergency lift out and repair berth facility
- Racing scrub available throughout the year
- Emergency lift for maintenance
- Lifts for hull surveys



For more information
 contact the Harbour Office on:
01548 843791 or e-mail:
Salcombe.harbour@southhams.gov.uk



Quality Used Boat Sales



Selling your boat? Make us your first port of call...

-  Affiliated offices throughout the UK, Europe and beyond
-  Highly experienced crew – nearly 1000 boats sold in the last 15 years
-  Extensive UK, Europe and world-wide marketing
-  Exciting new marina location

T: 01803 834864

E: sales@nybdartmouth.com

www.networkyachtbrokers.com

Noss on Dart Marina, Bridge Road, Kingswear Dartmouth, Devon TQ6 0EA



"A Warm welcome to all
visiting Yachtsman"

More than just a Sailing Club

Fabulous Location | Bar | Panoramic Views
over the Harbour | Terrace | Shower Facilities
| Free Wifi | Running Mooring | Private Dining
| Events | Walk-ins



SALCOMBE YACHT CLUB

www.salcombeyc.org.uk | 01548 842593

Join our award-winning **Gin School** experience, **Tours** or **Tastings**



Every drop is distilled at our waterside **Distillery** here in **Salcombe**



Refill your empty Salcombe Gin bottle for 20% off at our **Retail Stores**



Enjoy a cocktail at our waterside **Cocktail Bar** on Island Street



SALCOMBE
GIN

DISTILLERY | COCKTAIL BAR | GIN SCHOOL | TOURS & TASTINGS | RETAIL STORE

01548 843791

Salcombe Harbour VHF CHANNEL 14

Harbour Taxi VHF CHANNEL 12

WORLD
LAND
TRUST™
www.carbonbalancedprint.com
CBP2228

MIX
Paper | Supporting
responsible forestry
FSC® C022292
www.fsc.org